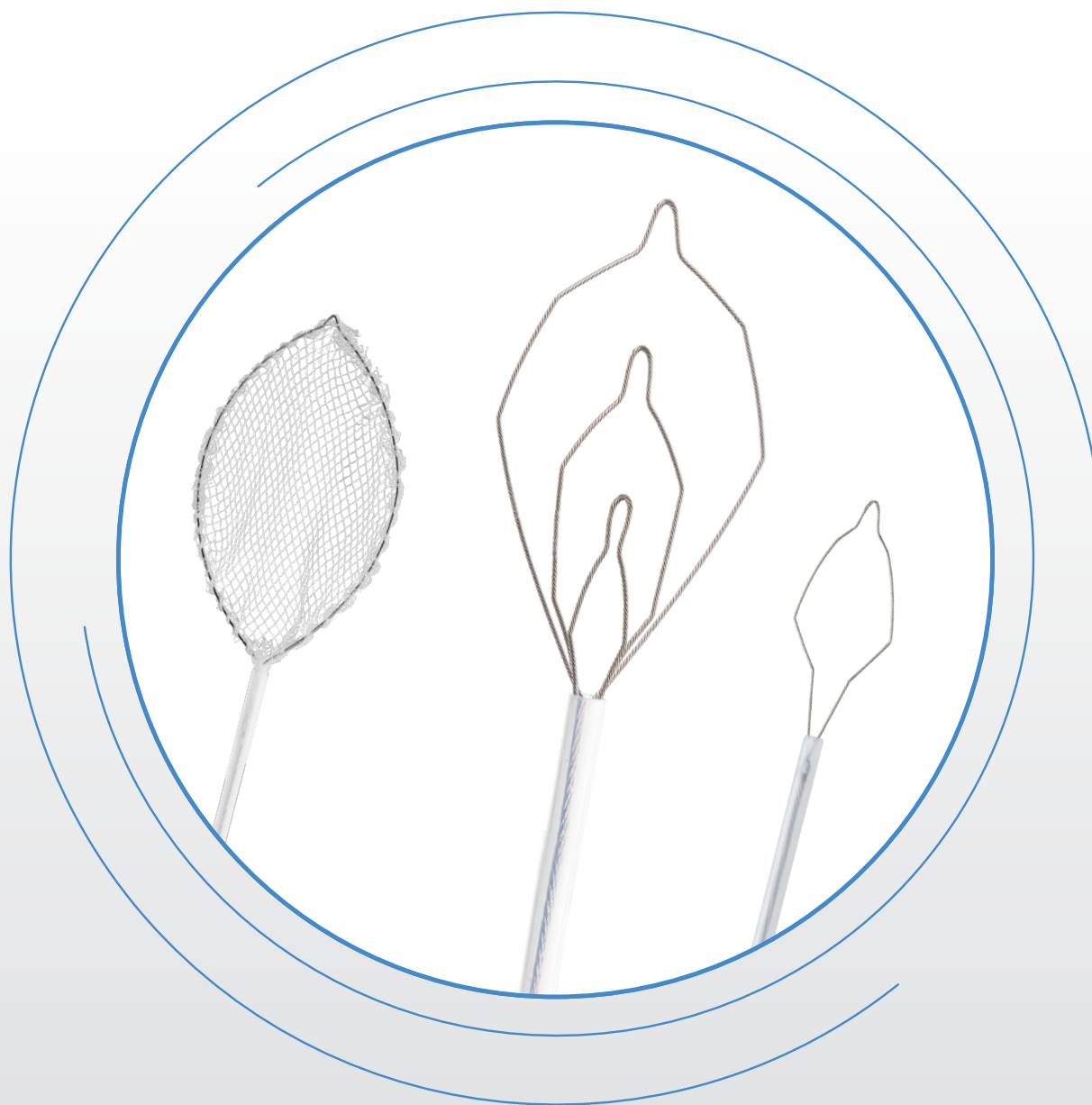


Polypectomy Solutions





POLYPECTOMY:

From a dynamic hot and cold snare with a coined distal tip to our clinically proven cold snare, we offer a product solution to accommodate a variety of needs.

Polypectomy Solutions

TABLE OF CONTENTS:

Product Name	Page Number
SmartBand® endoscopic mucosal resection kit	2
Endoscopic Marker	3
CoinTip™ snare	4
Histolock® resection device	4
Exacto® cold snare	5
Lariat® snare	6
iSnare® system	6
Roth Net® retrievers	7
eTrap® polyp trap	8
Reveal® distal attachment cap	8
Product Information Chart	9

SmartBand®

Endoscopic Mucosal Resection Kit

SmartBand EMR Kit

- ▶ The SmartBand EMR Kit is indicated for endoscopic mucosal resection in the upper GI tract. This device is intended for single use only.
 - Consists of a ligation handle with universal connector, loading device, flush tube, Pentax adaptor, barrel with 5 latex free bands, and the SmartSnare™ EMR Hexagonal Snare.



Key Features & Benefits...

- Obtains a larger tissue surface area without increasing resection depth.
- Features a controlled depth barrel designed for more consistent tissue capture.
- Offers a wider 360-degree visualization without the obstruction of bands.
- Brings visualization closer to the treatment site.



Excellent visualization prior to bands being deployed

Endoscopic Marker

Endoscopic Marker

- ▶ The Endoscopic Marker is indicated for endoscopically marking lesions in the GI tract when the endoscopist anticipates the lesion will require surgical removal within 30 days.
- ▶ Provides a method of marking target tissue and lesions on the wall of a patient's stomach or colon during an endoscopic procedure. The mark provides a reference point for subsequent removal of the tissue.

Key Features & Benefits...

- *No shake necessary - Allows for stable suspension of the ink.*
- *Stable emulsion - Does not migrate resulting in dark and permanent marks.*
- *Each syringe is prefilled - Preparation is simplified with ready-to-use product design. Each syringe comes with 5ml of the marking fluid.*
- *Sterile - The product is single use and sterile.*

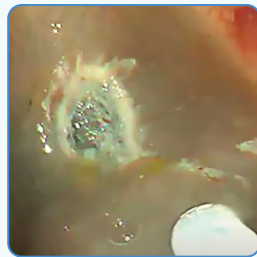


CoinTip™ snare / Histolock® resection device

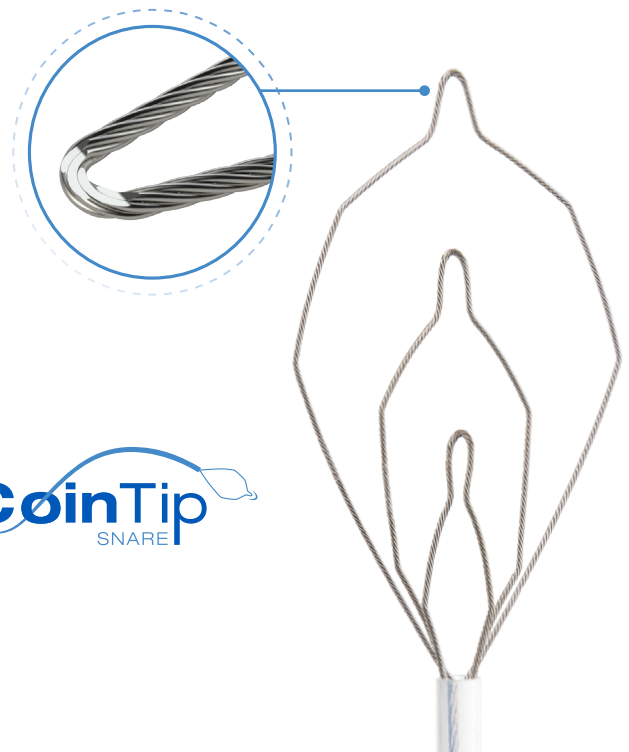
CoinTip snare

► The CoinTip snare features a dynamic braided wire configuration with a coined distal tip supporting hot and cold cutting capabilities specifically for complex polypectomies like endoscopic mucosal resection.

- *Distal tip flattened to 0.010" which is achieved by the manufacturing process of "coining"*
- *0.016" snare loop wire supports grip of tissue to capture target*
- *Catheter includes an internal strain relief for added support during resection to reduce buckling during tissue resection*

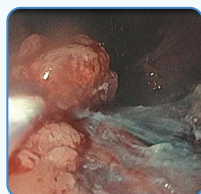
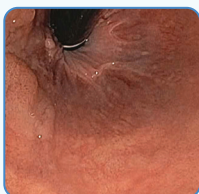


Resection sites after use of the CoinTip snare.

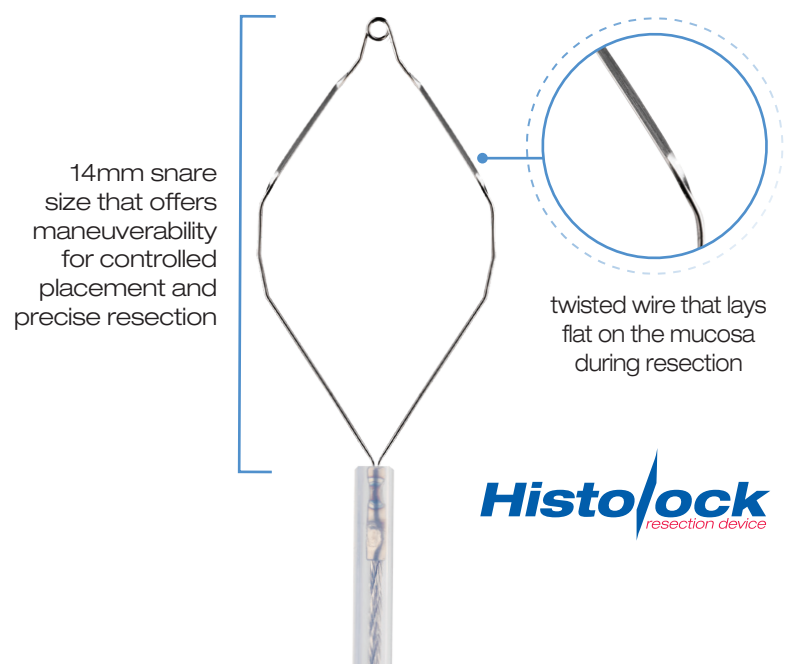


Histolock resection device

► The Histolock resection device features a stiff monofilament wire to help recruit and resect flat tissue during complex polypectomy procedures.



The Histolock device effectively resects a flat 4cm rectal polyp with precision.



Exacto® cold snare

Exacto cold snare

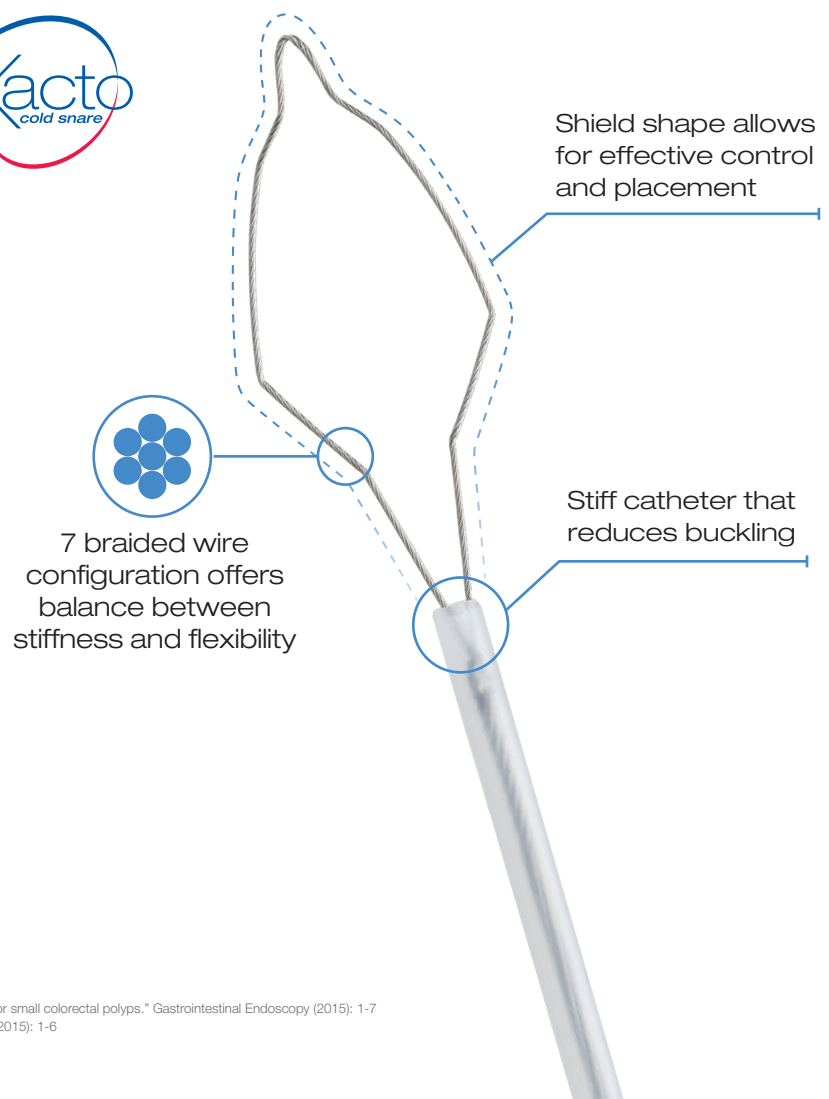
- ▶ Clinically proven to achieve a significantly higher rate of complete resection, the design of the Exacto cold snare offers control and placement for a precise, clean cut when compared to traditional braided snares.^{1,2}
 - Enables a clean cut with a thin wire design (0.012"/0.30mm) while maintaining its shape and stiffness
 - Features a shield shape design that maximizes its width for control and placement
 - 9mm mini snare size that facilitates polyp tissue resection without the use of cautery
 - Offers a thin, stiff catheter that decreases buckling while aiding in placement



40mm laterally spreading tumor resected with the Exacto cold snare



Clean, en bloc resection site of a subcentimeter polyp



1. Horiuchi A, Hosoi K. "Prospective, randomized comparison of 2 methods of cold snare polypectomy for small colorectal polyps." *Gastrointestinal Endoscopy* (2015): 1-7
2. Din S, Ball A. "Cold snare polypectomy: Does snare type influence outcomes?" *Digestive Endoscopy* (2015): 1-6

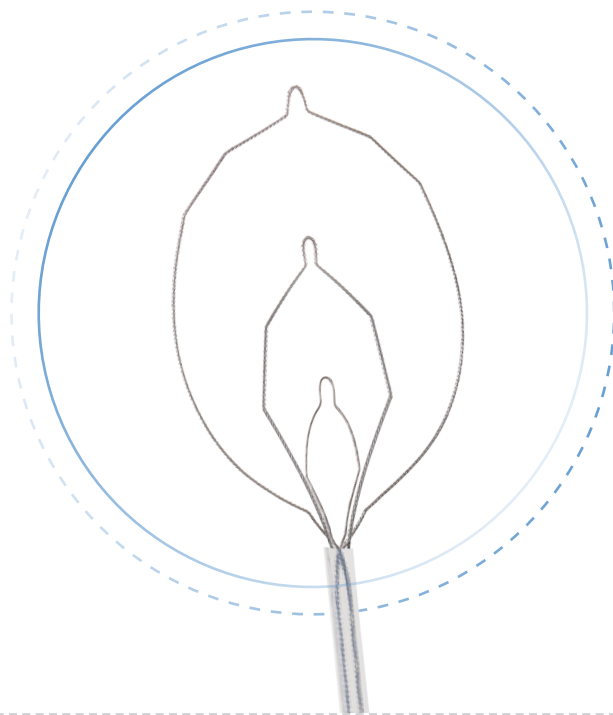
Lariat® snare / iSnare® system

Lariat snare

▶ The multi-functional design of the Lariat snare helps address a variety of resection needs including piecemeal resection and multiple polyps.



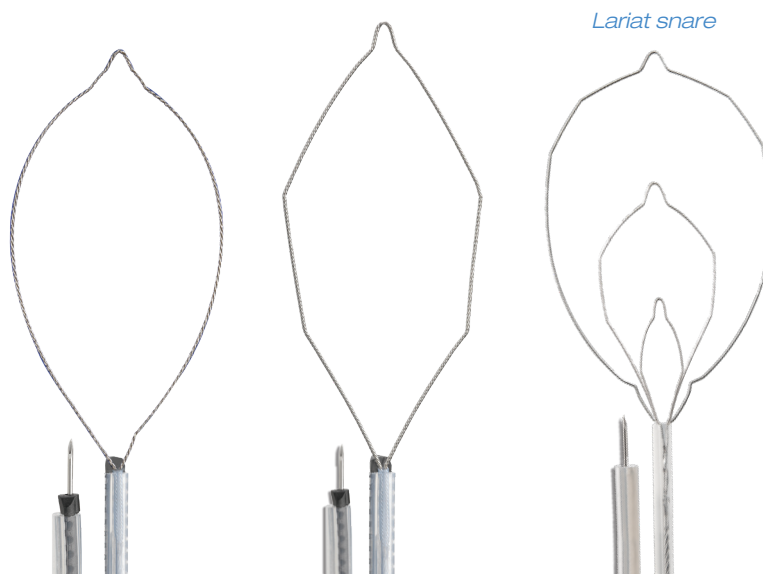
- *Three distinct shapes with multiple sizes to reduce the need to exchange snares*
- *Snare loop design maintains its shape and integrity after multiple resections*



iSnare system

▶ The iSnare system is a family of multi-functional devices designed to help reduce procedure time by minimizing device exchanges and aiding in clinical outcomes during submucosal injection polypectomy procedures.

- *Features alternating injection needle and snare operated by a multi-functional handle*
- *Enables immediate snaring to avoid cushion / bleb absorption*

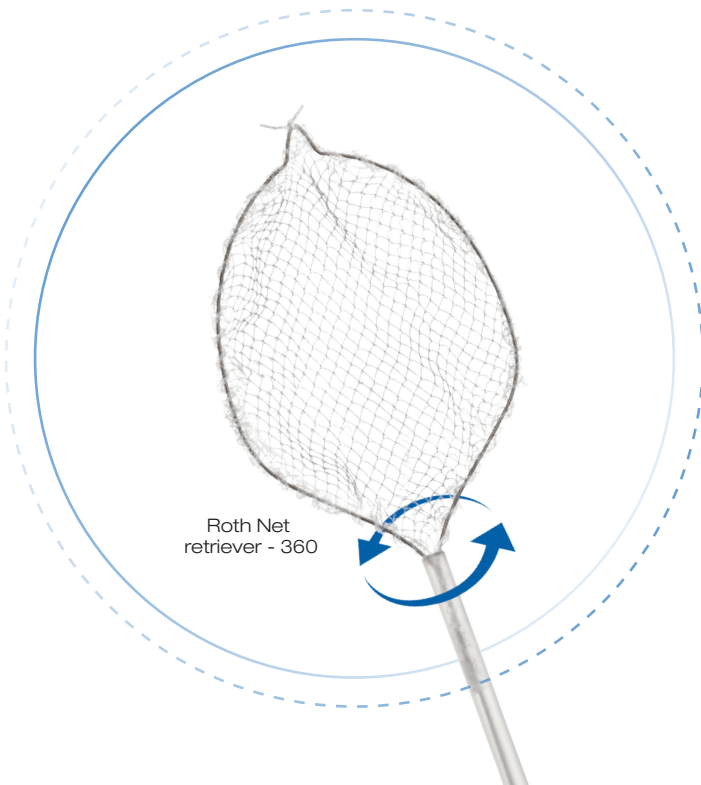


Roth Net[®] retrievers

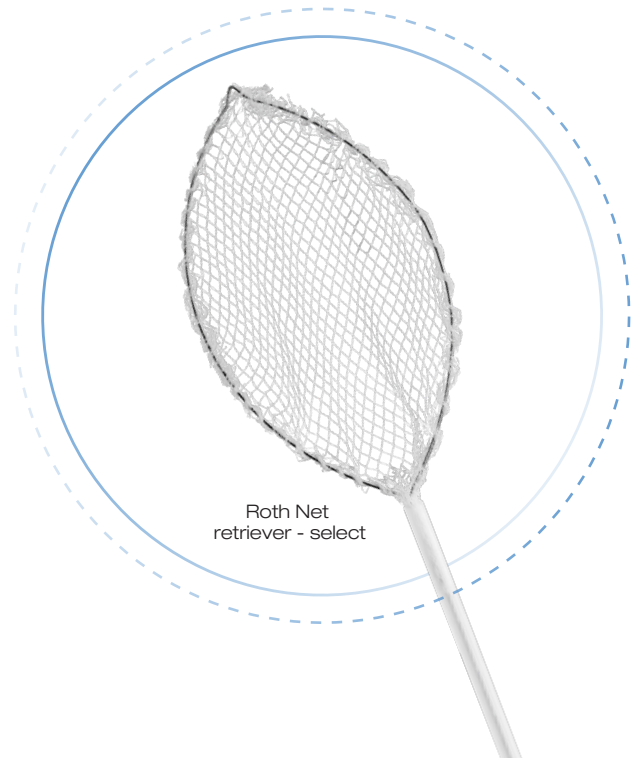
Roth Net retrievers

► From capturing large polyps to securing multiple polyp fragments, the Roth Net retriever is a device you can count on for consistent performance. Our all-encompassing line of retrieval nets...

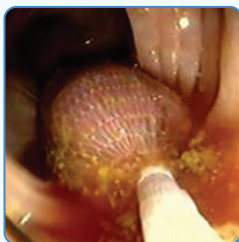
- *Preserve polyp fragments and specimens for histopathology*
- *Allow for durability and continued visibility through the net*
- *Opens even in retroflexed position*



Roth Net retriever - 360



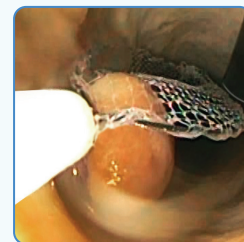
Roth Net retriever - select



Retrieval of large polyp with Roth Net retriever



Retrieval of multiple polyps/polyp fragments with Roth Net retriever



Roth Net retriever - select offering durability and strength across multiple passes

eTrap[®] polyp trap / Reveal[®] distal attachment cap

eTrap polyp trap

► Allows for quick and accurate retrieval of multiple specimens, while safeguarding clinicians from unnecessary exposure to biomaterials.

- *Collect multiple polyps with uninterrupted suction*
- *Simple transport and preservation of specimens*
- *Magnifying window allows direct visualization of the collected specimen*



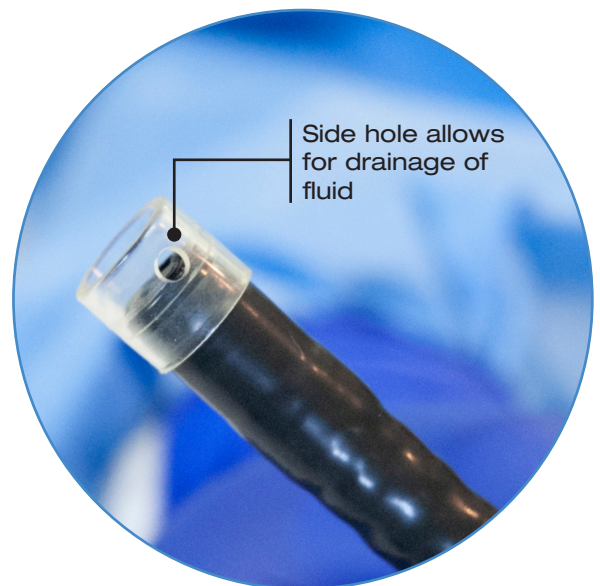
Includes
2 trays



Reveal attachment cap

► The Reveal distal attachment cap is designed to facilitate the endoscope's view during polypectomy procedures.

- *Helps avoid 'red out' by maintaining a constant distance between the endoscope and mucosa*
- *Can be used with other polypectomy devices, including snares and needles*



Product Information Chart

product number	description	barrel size (mm)	endoscopic diameter compatibility (mm)			units/box
SBEMRK94	SmartBand EMR Kit 9.4mm barrel tip diameter	9.4	8.6 – 11.6			EA
SBEMRK	SmartBand EMR Kit 10.75mm barrel tip diameter	10.75	8.6 – 11.6			EA
SBEMRK12	SmartBand EMR Kit 12.0mm barrel tip diameter	12.0	8.6 – 11.6			EA
SBEMRP94	SmartBand EMR Pack 9.4mm barrel tip diameter	9.4	8.6 – 11.6			EA
SBEMRP	SmartBand EMR Pack 10.75mm barrel tip diameter	10.75	8.6 – 11.6			EA
SBEMRP12	SmartBand EMR Pack 12.0mm barrel tip diameter	12.0	8.6 – 11.6			EA
product number	description	volume per syringe	sterile			units/box
BX00711836	Endoscopic Marker	5ml	yes			10
product number	description	needle gauge/projection	sheath diameter (mm)	length (cm)	snare size (mm)	units/box
BX00711018	Short Throw snare - mini	-	2.4	230	12.5 x 30	10
BX00711019	Short Throw snare - standard oval	-	2.4	230	25 x 54	10
BX00711084	iSnare system - Lariat snare	25 gauge x 5mm	2.5	230	oval: 30 x 55 hex: 10 x 28 diamond: 6 x 15	5
BX00711085	iSnare system - oval	23 gauge x 5mm	3.0	230	25 x 40	5
BX00711086	iSnare system - oval	25 gauge x 5mm	3.0	230	25 x 40	5
BX00711088	iSnare system - hexagonal	25 gauge x 5mm	3.0	230	25 x 40	5
BX00711089	iSnare system - hexagonal	23 gauge x 5mm	3.0	230	25 x 40	5
BX00711101	Short Throw snare - standard oval	-	2.4	350	25 x 54	5
BX00711113	Traxtion hexagonal snare	-	2.4	230	25 x 40	10
BX00711115	Exacto cold snare	-	2.4	230	9 x 19	10
BX00711094	Exacto cold snare	-	2.4	230	9 x 19	20
BX00711095	Exacto cold snare	-	2.4	230	9 x 19	50
BX00711110	CoinTip snare	-	2.5	230	deltoid: 20 x 32 hex: 10 x 27 diamond: 6 x 19	10
BX00711117	Histolock resection device	-	2.4	230	14 x 27	10
BX00711871*	Histolock resection device	-	2.4	230	14 x 27	3
BX00711119	Lariat snare	-	2.4	230	oval: 30 x 55 hex: 10 x 28 diamond: 6 x 15	10
BX00711096	Lariat snare	-	2.4	230		20
BX00711097	Lariat snare	-	2.4	230		50
BX00711120	Rotator snare - standard	-	2.4	230	25 x 54	10
BX00711121	Rotator snare - mini	-	2.4	230	12.5 x 30	10
product number	description	specimen strainer trays			units/box	
BX00711099	eTrap polyp trap Visit steris.com/healthcare to view our full line of polyp traps	50 (2 per unit)			25	
product number	description	endoscope tip O.D.	cap O.D.	length	packaging color	units/box
BX00711770	Reveal distal attachment cap (sterile)	8.9-9.5mm	11.35mm	4mm	pink	10
BX00711771	Reveal distal attachment cap (sterile)	9.5-9.9mm	11.8mm	4mm	blue	10
BX00711772	Reveal distal attachment cap (sterile)	9.8-10.5mm	12.4mm	4mm	orange	10
BX00711773	Reveal distal attachment cap (sterile)	10.9-11.8mm	13.4mm	4mm	light green	10
BX00711774	Reveal distal attachment cap (sterile)	12.6-13.2mm	15.0mm	4mm	yellow	10
BX00711775	Reveal distal attachment cap (sterile)	13.4-13.9mm	15.7mm	4mm	dark green	10
product number	description	sheath diameter (mm)		length (cm)	net size (mm)	qty/box
Tissue retrieval nets						
BX00711050	Roth Net retriever - standard	2.5		230	30 x 60	5
BX00711151	Roth Net retriever - polyp	2.5		230	30 x 60	10
BX00711162	Roth Net retriever - standard (sterile)	2.5		230	30 x 60	10
BX00715050	Roth Net Platinum retriever - polyp	2.5		230	40 x 55	5
BX00715060	Roth Net Platinum retriever - polyp (sterile)	2.5		230	40 x 55	5
Foreign body retrieval nets						
BX00711150	Roth Net retriever - standard	2.5		230	30 x 60	5
BX00711052	Roth Net retriever - standard	2.5		230	30 x 60	10
BX00711053	Roth Net retriever - standard	2.5		160	30 x 60	5
BX00711169	Roth Net retriever - select (sterile)	2.5		230	30 x 60	10
BX00711198	Roth Net retriever - 360 (sterile)	2.5		230	30 x 60	10
BX00711155	Roth Net Platinum retriever - food bolus	2.5		160	40 x 55	5
BX00711165	Roth Net retriever - maxi (sterile)	3.0		230	30 x 60	5
BX00715060	Roth Net Platinum retriever - universal (sterile)	2.5		230	40 x 55	5
Specialty retrieval nets						
BX00711152	Roth Net retriever - enteroscope	2.5		350	30 x 60	5
BX00711158	Roth Net retriever - mini polyp	2.8		230	25 x 45	10
BX00711159	Roth Net retriever - mini polyp (sterile)	2.8		230	25 x 45	5
BX00711168	Roth Net retriever - mini (sterile)	1.8		160	20 x 45	5

*Not for sale in the U.S.



Endoscopy

STERIS
5960 Heisley Road
Mentor, OH 44060-1834 – USA
Customer Service: 800-548-4873
Fax: 440-639-4495

www.steris.com

©2022 STERIS Endoscopy or its affiliates. All rights reserved.
Unless otherwise indicated, all marks denoted with ® or ™ are registered with the U.S.
Patent and Trademark Office, or are trademarks owned by STERIS or its affiliates.

Follow us:    

761130 Rev. F