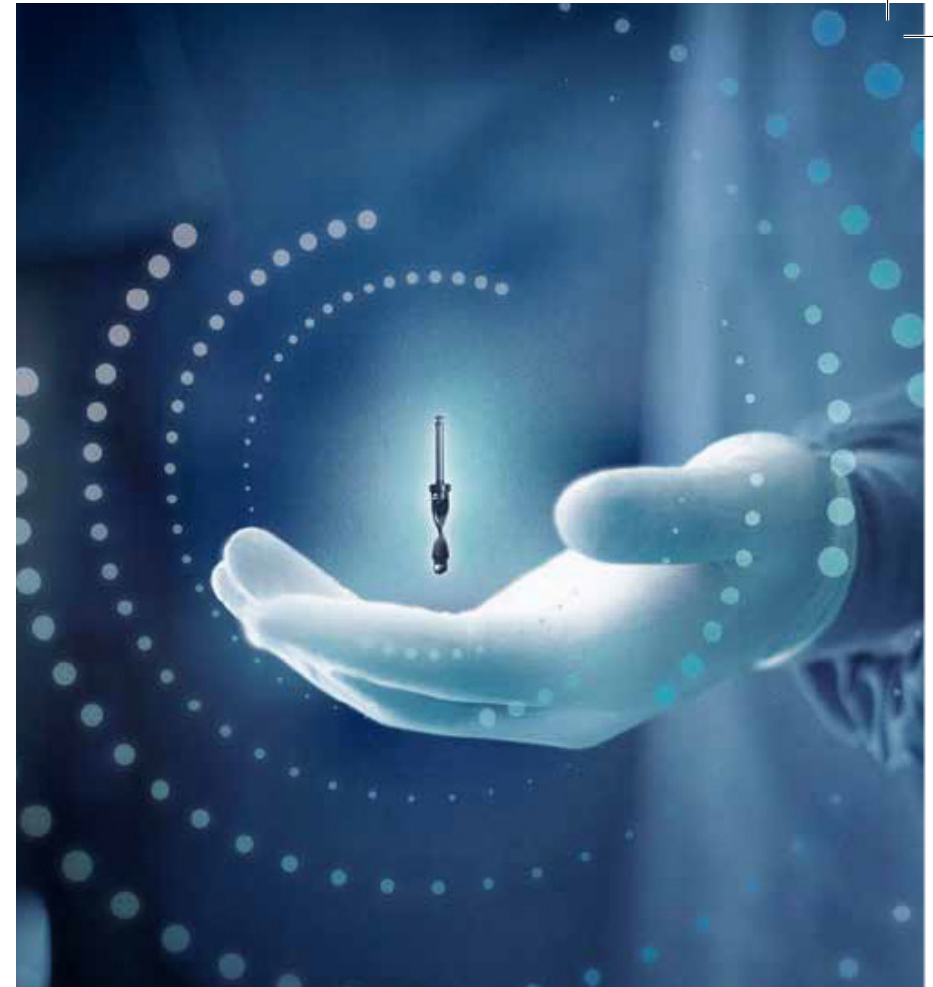


Oticon Medical

## Ponto™ Minimally Invasive Procedures Proven to offer great outcomes

- Components designed to protect soft tissue
- Convenient packaging of all necessary components
- Improved clinical efficiency
- Choice to select any abutment mounted processor
- Implant is MRI Compatible without intervention or modification



19900-2057/03.02.23

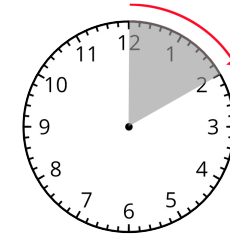
Oticon Medical, LLC  
580 Howard Avenue  
Somerset, NJ 08873, USA  
888.227.8014  
[info@oticonmedicalusa.com](mailto:info@oticonmedicalusa.com)

**oticon**  
MEDICAL

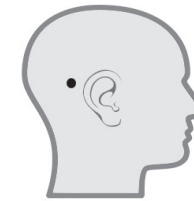
Oticon Medical

## Ponto™ Minimally Invasive Procedures

Proven to offer great outcomes



**10 minute** average procedure time ( $\pm 5.5$  min)\*



**97%** of all visits had no or minor skin reactions\*



**95%** of all patients increased quality of life\*

\* Reference: Data on file at Oticon Medical, Clinical study BC108

Oticon Medical, LLC  
580 Howard Avenue  
Somerset, NJ 08873, USA  
888.227.8014  
info@oticonmedicalusa.com

**oticon**  
MEDICAL