

THE RIGHT TREATMENT AT THE RIGHT TIME



GammaTile Therapy

An eloquent solution for brain tumors

Indication: GammaTile is intended to deliver radiation therapy in patients with newly diagnosed malignant intracranial neoplasms and recurrent intracranial neoplasms.



E N V I S I O N B E T T E R O U T C O M E S

Tough on the tumor. Easier on patients and caregivers.

- Limits radiation exposure to healthy tissue, minimizing side effects, including hair loss¹
- Assures 100% “built-in” treatment compliance for all patients
- Reduces patient and caregiver treatment burden in terms of time and travel

“

My quality of life has been very good due to GammaTile Therapy. I’m just really thankful that GammaTile Therapy was available.”

JOAN
MENINGIOMA TUMOR SURVIVOR



“

After multiple surgeries, oral chemo, and external beam radiation, I was ready to try something new, and I’m glad I received GammaTile Therapy. I feel great and bounced back quickly—my best recovery.”

SHANNAN
LOW-GRADE GLIOMA TUMOR SURVIVOR





Target tumor cells.
Preserve eloquent brain tissue.

GammaTile Therapy | Surgically Targeted Radiation Therapy (STaRT)

Get a head STaRT in fighting brain tumors by delivering immediate dose-intense treatment at the completion of resection with GammaTile Therapy. Extend local recurrence-free survival with minimal complications, reduced patient and caregiver burden, and assured compliance.²

Right treatment.

Designed with structural offset to protect healthy and eloquent tissue

Right time.

Immediate treatment, initiated at resection

Right place.

Implanted precisely by the neurosurgeon, eliminating the need to travel for radiation treatment

UNIFORM RADIATION SOURCE,
STRUCTURALLY OFFSET DESIGN

2-cm HEIGHT | 2-cm WIDTH | 4-mm THICKNESS

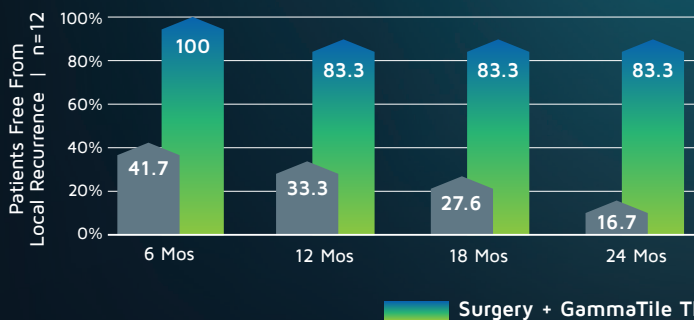


GAMMATILE THERAPY | PROVEN EFFICACY AND SAFETY

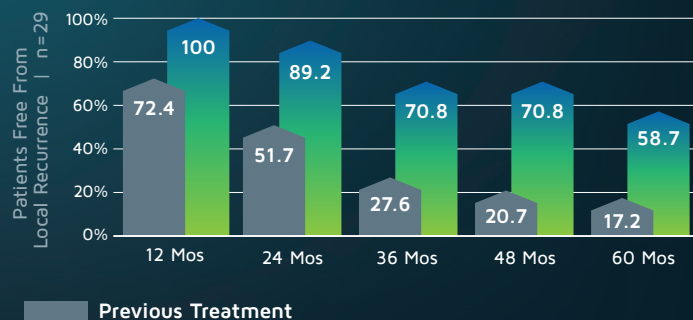
CLINICAL OUTCOMES | LOCAL CONTROL

GammaTile Therapy significantly improves local control vs the previous standard of care in patients with recurrent brain metastases and recurrent meningiomas^{3,4}

RECURRENT BRAIN METASTASES^{3,*}



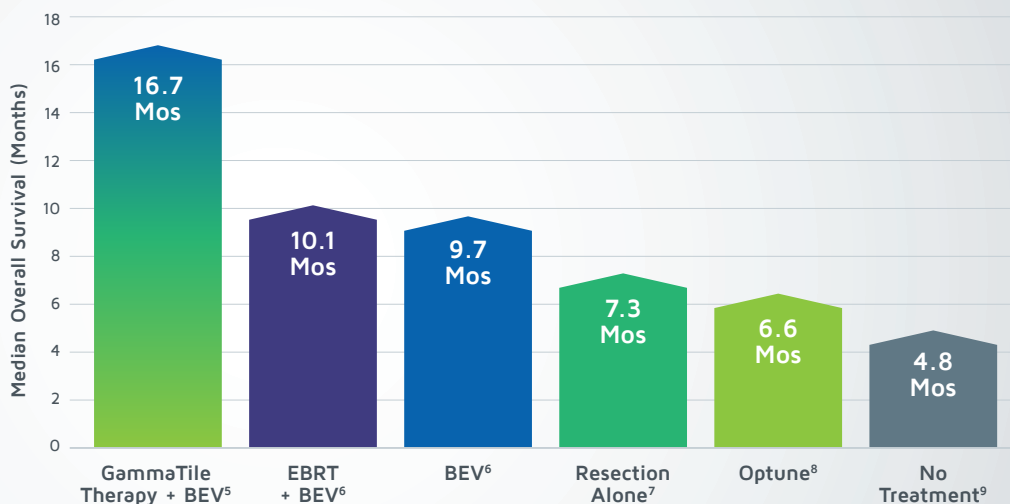
RECURRENT MENINGIOMAS^{4,*}



* Results compared different treatments within the same patient population.

OVERALL SURVIVAL FOR RECURRENT GLIOBLASTOMA⁵⁻⁹

GammaTile Therapy demonstrates a potential for improved overall survival when comparing the effectiveness of surgery plus GammaTile Therapy to other treatment modalities across different clinical studies in patients with recurrent glioblastoma (GBM).



EXCELLENT SAFETY PROFILE

Treatment Type

Traditional brachytherapy¹⁰⁻¹²

GammaTile Therapy^{2,†}

Radiation-Related Brain Changes

18%–48%

7.6%

† Defined as common terminology criteria for adverse events (CTCAE v5.0), Grade 3–5 possibly or probably related to GammaTile Therapy placement occurring at any time during follow-up. In a clinical study, no Grade 4 or Grade 5 adverse events occurred related to GammaTile Therapy.

Achieve local control with optimized dosimetry

- GammaTile uses a Cesium-131 radiation source, which has a half-life of 9.7 days²
- 50% of the therapeutic dose is delivered within the first 10 days after surgery, which helps prevent residual tumor cells from replicating¹³
- More than 95% of the dose is delivered by 6 weeks¹³
- Favorable depth-dose profile optimizes local tumor control^{14,15}
- Uniform radiation-source spacing ensures a predictable, therapeutic radiation dose
- Its design helps limit the radiation exposure to medical staff and caregivers¹⁶

INTENSITY-MODULATED RADIATION THERAPY (IMRT)²

GAMMATILE THERAPY^{2,‡}

GAMMATILE THERAPY VS IMRT

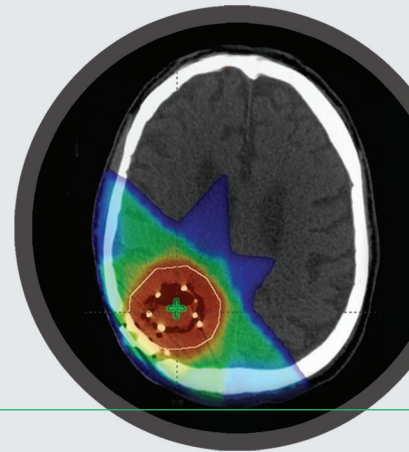
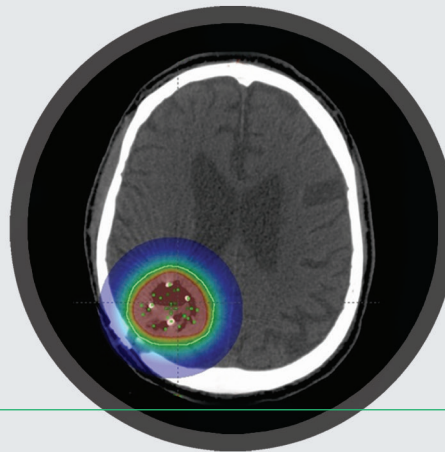
Colors indicate radiation location and intensity from the 2 types of treatment.

Blue-green indicates lower radiation levels.

Red indicates higher levels.

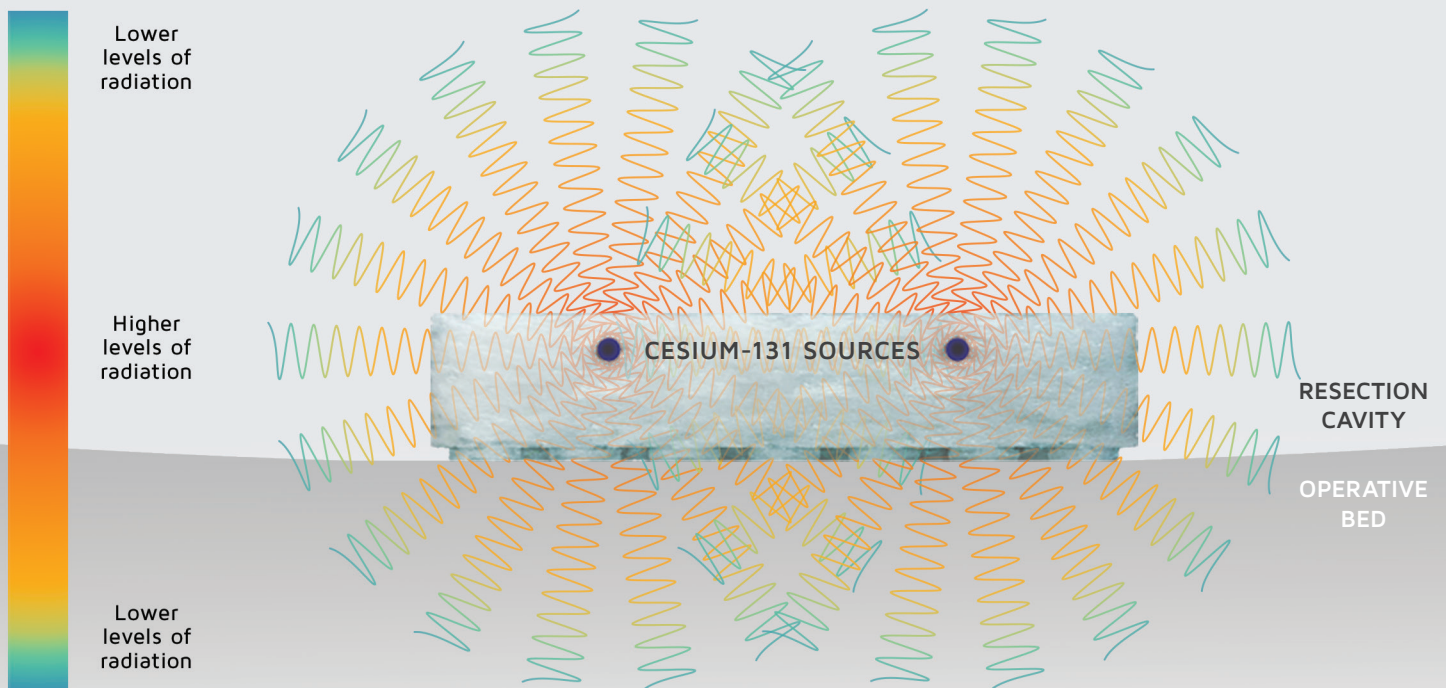
The area of treatment intent corresponds to the continuous lighter circles.

‡ The extracranial dose is likely lower than shown, as the planning system did not utilize inhomogeneity corrections.



CESIUM-131 DISTRIBUTION AND INTENSITY¹⁴

GammaTile was designed to deliver a dose of ~60 Gy at a 5-mm depth in the operative bed when 3+ tiles are implanted



Offering extensive resources, training, and support for your GammaTile program

- Delivering world-class clinical training and ongoing clinical support
- Facilitating GammaTile Therapy cases with a purpose-built MIM® Software treatment planning system (TPS)
- Providing patient education and support materials
- Connecting prospective patients with treated patients through our Patient Navigator Program
- Helping patients find your center with our GammaTile Therapy Center Locator
- Promoting GammaTile Therapy physician-to-physician education through our Referring Physician Program
- Continuously investing in clinical trials to support our research-driven approach to brain tumor treatment

REFERENCES

1. Brachman D, Youssef E, Dardis C, et al. Surgically targeted radiation therapy: Safety profile of collagen tile brachytherapy in 79 recurrent, previously irradiated intracranial neoplasms on a prospective clinical trial. *Brachytherapy*. 2019;18(3):S35-S36.
2. Nakaji P, Youssef E, Dardis C, et al. Surgically targeted radiation therapy: a prospective trial in 79 recurrent, previously irradiated intracranial neoplasms. Presented at: 2019 AANS Annual Scientific Meeting; April 2019; San Diego, CA.
3. Nakaji P, Smith K, Youssef E, et al. Resection and surgically targeted radiation therapy for the treatment of larger recurrent or newly diagnosed brain metastasis: results from a prospective trial. *Cureus*. 12(11):1-12.
4. Rogers L, Nakaji P, Youssef E, et al. Resection and surgically targeted radiation therapy for initial salvage treatment of aggressive meningioma: results from a prospective trial. Presented at: CNS 2020 Virtual Conference; September 30, 2020.
5. Data on file, GT Medical Technologies, Inc.
6. Tsien C, Pugh S, Dicker AP, et al. Randomized phase II trial of re-irradiation and concurrent bevacizumab versus bevacizumab alone as treatment for recurrent glioblastoma (NRG Oncology/RTOG 1205): initial outcomes and RT plan quality report. *Int J Radiat Oncol Biol Phys*. 2019;105(1):S78.
7. Clarke J, Ennis M, Yung W, et al. Is surgery at progression a prognostic marker for improved 6-month progression-free survival or overall survival for patients with recurrent glioblastoma? *Neuro Oncology*. 2011;13(10):1118-1124.
8. Stupp R, Wong E, Kanner A, et al. NovoTTF-100A versus physician's choice chemotherapy in recurrent glioblastoma: a randomised phase III trial of a novel treatment modality. *Euro J Cancer*. 2012;48(14):2192-2202.
9. Shi W, Bryan M, Gilbert M, et al. Investigating the effect of reirradiation or systemic therapy in patients with glioblastoma after tumor progression: a secondary analysis of NRG Oncology/Radiation Therapy Oncology group trial 0525. *Int J Radiat Oncol Biol Phys*. 2018;100(1):38-44.
10. Combs S, Debus J, Schulz-Ertner D. Radiotherapeutic alternatives for previously irradiated recurrent gliomas. *BMC Cancer*. 2007;7:167.
11. Wernicke A, Smith A, Taube S, et al. Cesium-131 brachytherapy for recurrent brain metastases: durable salvage treatment for previously irradiated metastatic disease. *J Neurosurg*. 2017;126(4):1212-1219.
12. Magill S, Lau D, Raleigh D, et al. Surgical resection and interstitial iodine-125 brachytherapy for high-grade meningiomas: a 25-year series. *Neurosurgery*. 2017;80(3):409-416.
13. Brachman D, Youssef E, Dardis C, et al. Resection and permanent intracranial brachytherapy using modular, biocompatible cesium-131 implants: results in 20 recurrent, previously irradiated meningiomas. *J Neurosurg*. 2019;131(6):1819-1828.
14. Pinnaduwage D, Youssef E, Sorensen S, et al. Dosimetric impact of radioisotope type on permanent brain seed implants. *Medical Physics*. 2017;44(6):3146.
15. Armpilia C, Dale R, Coles I, et al. The determination of radiobiologically optimized half-lives for radionuclides used in permanent brachytherapy implants. *Int J Radiat Oncol Biol Phys*. 2003;55(2):378-385.
16. Moss NS, Imber BS, Prasad K, et al. Permanent intracavitary Cs131 brachytherapy for previously-irradiated recurrent brain metastases: initial clinical and radiation safety experience. *Neuro-Oncology Advances*. 2020;2(suppl 2):ii14.

Indication: GammaTile is intended to deliver radiation therapy in patients with newly diagnosed malignant intracranial neoplasms and recurrent intracranial neoplasms. Side effects related to GammaTile Therapy are rare, and may include radiation brain changes including necrosis. Refer to the instructions for use for a complete description of all warnings, precautions, and contraindications.

©2020 GT Medical Technologies, Inc. | All rights reserved

GammaTile is a registered trademark of GT Medical Technologies, Inc. | DEC 2020 | MKT-001-2