

Diagnostic Accuracy of a Plasma Phosphorylated Tau 217 Immunoassay for Alzheimer Disease Pathology

Nicholas J. Ashton, PhD; Wagner S. Brum; Guglielmo Di Molfetta, MSc; Andrea L. Benedet, PhD; Burak Arslan, MD; Erin Jonaitis, PhD; Rebecca E. Langhough, PhD; Karly Cody, PhD; Rachael Wilson, PhD; Cynthia M. Carlsson, PhD; Eugene Vanmechelen, PhD; Laia Montoliu-Gaya, PhD; Juan Lantero-Rodriguez, PhD; Nesrine Rahmouni, MSc; Cecile Tissot, PhD; Jenna Stevenson, PhD; Stijn Servaes, PhD; Joseph Theriault, PhD; Tharick Pascoal, MD, PhD; Alberto Lleó, MD, PhD; Daniel Alcolea, MD, PhD; Juan Fortea, MD, PhD; Pedro Rosa-Neto, MD, PhD; Sterling Johnson, MD, PhD; Andreas Jeromin, PhD; Kaj Blennow, MD, PhD; Henrik Zetterberg, MD, PhD

 [Supplemental content](#)

IMPORTANCE Phosphorylated tau (p-tau) is a specific blood biomarker for Alzheimer disease (AD) pathology, with p-tau217 considered to have the most utility. However, availability of p-tau217 tests for research and clinical use has been limited. Expanding access to this highly accurate AD biomarker is crucial for wider evaluation and implementation of AD blood tests.

OBJECTIVE To determine the utility of a novel and commercially available immunoassay for plasma p-tau217 to detect AD pathology and evaluate reference ranges for abnormal amyloid β (A β) and longitudinal change across 3 selected cohorts.

DESIGN, SETTING, AND PARTICIPANTS This cohort study examined data from 3 single-center observational cohorts: cross-sectional and longitudinal data from the Translational Biomarkers in Aging and Dementia (TRIAD) cohort (visits October 2017–August 2021) and Wisconsin Registry for Alzheimer's Prevention (WRAP) cohort (visits February 2007–November 2020) and cross-sectional data from the Sant Pau Initiative on Neurodegeneration (SPIN) cohort (baseline visits March 2009–November 2021). Participants included individuals with and without cognitive impairment grouped by amyloid and tau (AT) status using PET or CSF biomarkers. Data were analyzed from February to June 2023.

EXPOSURES Magnetic resonance imaging, A β positron emission tomography (PET), tau PET, cerebrospinal fluid (CSF) biomarkers (A β 42/40 and p-tau immunoassays), and plasma p-tau217 (ALZpath pTau217 assay).

MAIN OUTCOMES AND MEASURES Accuracy of plasma p-tau217 in detecting abnormal amyloid and tau pathology, longitudinal p-tau217 change according to baseline pathology status.

RESULTS The study included 786 participants (mean [SD] age, 66.3 [9.7] years; 504 females [64.1%] and 282 males [35.9%]). High accuracy was observed in identifying elevated A β (area under the curve [AUC], 0.92–0.96; 95% CI, 0.89–0.99) and tau pathology (AUC, 0.93–0.97; 95% CI, 0.84–0.99) across all cohorts. These accuracies were comparable with CSF biomarkers in determining abnormal PET signal. The detection of abnormal A β pathology using a 3-range reference yielded reproducible results and reduced confirmatory testing by approximately 80%. Longitudinally, plasma p-tau217 values showed an annual increase only in A β -positive individuals, with the highest increase observed in those with tau positivity.

CONCLUSIONS AND RELEVANCE This study found that a commercially available plasma p-tau217 immunoassay accurately identified biological AD, comparable with results using CSF biomarkers, with reproducible cut-offs across cohorts. It detected longitudinal changes, including at the preclinical stage.

Author Affiliations: Author affiliations are listed at the end of this article.

Corresponding Author: Nicholas J. Ashton, PhD, Institute of Neuroscience and Physiology, Department of Psychiatry and Neurochemistry, Sahlgrenska Academy at Gothenburg University, Mölndal Hospital, Hus V3, 43180 Mölndal, Sweden (nicholas.ashton@gu.se).

JAMA Neurol. doi:10.1001/jamaneurol.2023.5319
Published online January 22, 2024.

In Alzheimer disease (AD), blood biomarkers have emerged as scalable tools for clinical evaluation, trial recruitment, and disease monitoring.¹ Their anticipated implementation aims to substantially reduce the reliance on cerebrospinal fluid (CSF) or positron emission tomography (PET) scans in specialized centers.² Moreover, a robust and accurate blood-based biomarker would enable a more comprehensive assessment of cognitive impairment in settings where advanced testing is limited. Therefore, use of a blood biomarker is intended to enhance an early and precise AD diagnosis, leading to improved patient management and, ultimately, timely access to disease-modifying therapies.

Phosphorylated tau (p-tau) is the leading blood biomarker candidate, demonstrating superior diagnostic accuracy and disease specificity compared with other candidates.^{3,4} The amyloid β 42/40 (A β 42/40) ratio, a validated CSF biomarker,⁵ has limitations in blood^{6,7} and lacks the robustness required for routine clinical testing.^{8,9} In contrast, high-performing p-tau blood test results exhibit a substantial increase in patients with AD,¹⁰ occurring concurrently with extracellular A β plaque deposition, an AD hallmark feature. This relationship is observed across the AD continuum, including the asymptomatic phase in sporadic and genetic forms of AD.¹¹⁻¹⁴ Yet certain p-tau species, but not all, are also associated with neurofibrillary tangle pathology, the secondary AD pathological hallmark.¹⁵⁻¹⁷ Thus, p-tau is regarded as the primary blood biomarker for AD pathology throughout all stages of the disease.

Among proposed blood tau biomarkers,¹⁸⁻²¹ phosphorylated tau at threonine 217 (p-tau217) has consistently shown high performance in differentiating AD from other neurodegenerative disorders^{10,22} and in detecting AD pathology in patients with mild cognitive impairment (MCI).²² Notably, p-tau217 exhibits larger-fold changes compared with p-tau181 and p-tau231,¹⁰ often achieving high discrimination, with areas under the curve (AUC) exceeding 90%.^{19,23} Additionally, p-tau217 demonstrates a unique longitudinal trajectory, showing increases associated with worsening brain atrophy and declining cognitive performance in individuals with elevated A β pathology.^{24,25}

With the imminent implementation of anti-A β therapies in dementia management, validated blood biomarkers are urgently needed to guide timely treatment decisions. While plasma p-tau217 has shown promise as a diagnostic tool for AD, its widespread evaluation has been hindered by limited availability of commercial assays. This study aims to address this gap by assessing the utility of ALZpath pTau217, a commercially available immunoassay, to highlight the presence of AD pathology. In addition, we aim to report reference ranges of the plasma p-tau217 that correspond to abnormal amyloid PET and CSF measures.

Methods

This study included participants from 3 observational cohorts: the Translational Biomarkers in Aging and Dementia (TRIAD), Wisconsin Registry for Alzheimer's Prevention (WRAP), and Sant Pau Initiative on Neurodegeneration (SPIN).

Key Points

Question What are the capabilities of a commercially available plasma phosphorylated tau 217 (p-tau217) immunoassay to identify Alzheimer disease pathophysiology?

Findings This cohort study found that the p-tau217 immunoassay showed similar accuracies to cerebrospinal fluid biomarkers in identifying abnormal amyloid β (A β) and tau pathologies. A 3-range reference for detecting abnormal A β pathology was consistent across 3 cohorts; over 8 years, the largest change of p-tau217 was in individuals positive for both A β and tau.

Meaning The wider availability of high-performing assays may expedite the use of blood biomarkers in clinical settings and benefit the research community.

Participants gave written or verbal informed consent, and the studies were approved by the relevant ethics boards (eMethods in Supplement 1). The present study followed the Strengthening the Reporting of Observational Studies in Epidemiology (STROBE) reporting guidelines.

TRIAD included 268 participants who had no cognitive impairment (134 individuals [50%]), MCI (63 [23.5%]), AD dementia (46 [17.2%]), and non-AD dementia (24 [9.0%]). The WRAP study²⁶ included data on 323 participants, predominantly without cognitive impairment at the first plasma sample collection (no impairment, 309 [95.6%]; MCI, 12 [3.7%]; AD dementia, 2 [0.6%]). The SPIN cohort²⁷ included 195 participants: controls without cognitive impairment (82 [42.1%]), individuals with MCI due to AD (72 [36.7%]), and individuals with AD dementia (41 [21.0%]). Diagnosis was based on internationally recognized clinical criteria, and control participants had normal cognitive scores on standard neuropsychological evaluations. A subset of patients with longitudinal follow-up consisted of 392 participants from TRIAD and WRAP defined by PET biomarkers (eTable 1 in Supplement 1). These included participants classified into 3 groups: amyloid- and tau-negative (A-T-; n = 297), amyloid-positive and tau-negative (A+T-; n = 66), and amyloid-positive and tau-positive (A+T+; n = 29). In WRAP, the median number of samples collected per patient was 3 over a mean (SD) of 5.22 (1.41) years. In TRIAD, median samples per patient was 2, collected over a mean of 1.90 (0.61) years.

Imaging, CSF, and Plasma Biomarkers

Detailed imaging methods for TRIAD, WRAP, and SPIN are found in the eMethods in Supplement 1. In TRIAD, A β and tau PET were determined by [¹⁸F]-AZD4694²⁸ and [¹⁸F]-MK6240,²⁹ respectively. In WRAP, PET measures were determined by [¹¹C]-PiB³⁰ and [¹⁸F]-MK6240.^{31,32} In SPIN, A β PET was determined by [¹⁸F]-florbetapir or [¹⁸F]-flutemetamol in a smaller subset of participants, with CSF A β 42/40 used to define A status for most participants as described below. Tau PET was not available for the SPIN cohort, and T was defined by CSF p-tau181. A β -PET positivity was standardized across cohorts as a centiloid value greater than 24 (standardized uptake value ratio [SUVR] >1.55 for [¹⁸F]-AZD4694³³ or distribution volume ratio >1.2 for [¹¹C]-PiB). Tau positivity with [¹⁸F]-MK6240 was defined as meta-temporal region of interest SUVR

greater than 1.24 for TRIAD³⁴ and SUVR greater than 1.3 in WRAP.

CSF sample collection procedures were similar across cohorts and are described in the eMethods in [Supplement 1](#). In TRIAD and SPIN, Lumipulse G1200 or G600II was used to quantify CSF A β 42, A β 40, and p-tau181.^{35,36} Additionally, CSF p-tau217 was quantified by an in-house single-molecule array (Simoa) developed at the University of Gothenburg.³³ A novel Simoa for CSF p-tau205 was measured in TRIAD only. For WRAP, CSF A β 42, A β 40, and p-tau181 were measured using the Roche NeuroToolKit.³⁷

Plasma samples from TRIAD, WRAP, and SPIN were analyzed at the Department of Psychiatry and Neurochemistry, University of Gothenburg. Plasma A β 42/40, glial fibrillary acidic protein (GFAP), and neurofilament light chain (NfL) were quantified using the commercial Neurology 4-plex E kit (103670; Quanterix). Plasma p-tau231 and p-tau181 were analyzed using in-house Simoa assays developed at the University of Gothenburg,^{18,38} except in WRAP where plasma p-tau181 was quantified by the commercial Advantage kit version 2.1 (104111; Quanterix).²⁴

Novel p-Tau217 Assay

The commercial ALZpath pTau217 assay for p-tau217 uses a proprietary monoclonal p-tau217 specific capture antibody, an N-terminal detector antibody, and a peptide calibrator. It has been validated as a fit-for-purpose assay³⁸ with a limit of detection of 0.0052 to 0.0074 pg/mL, a functional lower limit of quantification of 0.06 pg/mL, and a dynamic range of 0.007 to 30 pg/mL. The spike recovery for the endogenous analyte was 80%, and intrarun and interrater precision was 0.5% to 13% and 9.2% to 15.7%, respectively. Here, the assay demonstrated good repeatability (4%-8.7%) and intermediate precision (3.5%-10.7%) as shown in eTable 2 in [Supplement 1](#).

Statistical Analysis

Between-group comparisons were conducted using linear models, adjusting for age and sex. Determining A β -PET and tau-PET positivity and other outcomes was done using receiver operating characteristics AUC and compared with those of other established biomarkers with the DeLong test. Correlations were always evaluated using Spearman ρ . A binary reference point for A β -PET positivity was derived based on the Youden index.

Alternatively, a 3-range strategy comprised a lower reference point to rule out AD (95% sensitivity) and a higher reference point to rule in AD (95% specificity). In both strategies, we evaluated the concordance of a negative p-tau217 result with A β -PET negativity (negative percent agreement), and the concordance of a positive plasma p-tau217 with A β -PET positivity (positive percent agreement), as well as the overall percent agreement. In the latter strategy, individuals with p-tau217 levels between the reference point were classified as intermediate risk and would constitute the population referred to confirmatory testing.³⁹

We evaluated the longitudinal trajectories of plasma p-tau217 in participants with no cognitive impairment and those with MCI according to their amyloid (A) and tau (T) status. We

used linear mixed-effects models with plasma p-tau217 as the response variable, including as predictors time (since first plasma collection), AT status, age at first plasma collection, years of education, sex, and cognitive status at first visit, as well as an interaction between AT status and time. The model contained random intercepts and random slopes for each participant, and time was modeled as a continuous variable. Post hoc pairwise contrasts were conducted to compare the slopes for group \times time interactions.

All analyses were performed using R version 4.2.2 (R Project for Statistical Computing), with a 2-sided α of .05. No adjustments for multiple comparisons were performed.⁴⁰ Reported results include 95% confidence intervals when applicable.

Results

Participant Characteristics

A total of 786 participants (mean [SD] age, 66.3 [9.7] years; 504 females [64.1%], 282 males [35.9%]) were included in the study. The TRIAD subsample included 268 participants (69.4 [7.8] years; 167 females [62.3%], 101 males [37.7%]). The WRAP cohort included 323 participants (65.3 [6.9] years; 217 females [67.2%], 106 males [32.8%]), predominantly without cognitive impairment. The SPIN cohort included 195 participants (63.5 [13.8] years; 120 females [61.5%], 75 males [38.5%]). All participants had confirmatory amyloid status (TRIAD and WRAP: A β PET; SPIN: CSF A β 42/A β 40), and the majority (716 [91.1%]) also had information on tau status (TRIAD and WRAP: tau PET; SPIN: CSF p-tau181), as described in [Table 1](#) alongside demographic and clinical information for all cross-sectional analyses. eTable 2 in [Supplement 1](#) describes the TRIAD and WRAP longitudinal subsets.

p-Tau217 Levels by Amyloid and Tau Status

When stratified by AT status, regardless of clinical diagnosis, plasma p-tau217 significantly increased in a stepwise manner in all cohorts ([Figure 1](#)), with highest levels in the A+T+ group. Mean p-tau217 concentrations for A–T– (mean [SD] TRIAD, 0.26 [0.13] pg/mL; WRAP, 0.35 [0.15] pg/mL; SPIN, 0.32 [0.11] pg/mL), A+T– (TRIAD, 0.75 [0.63] pg/mL; WRAP, 0.72 [0.30] pg/mL; SPIN, 0.91 [0.47] pg/mL), and A+T+ (TRIAD, 1.48 [0.65] pg/mL; WRAP, 1.41 [0.70] pg/mL; SPIN, 1.50 [0.70] pg/mL) were remarkably similar across all 3 cohorts. This was also observed when stratifying by amyloid status alone (A–, TRIAD, 0.28 [0.21] pg/mL; WRAP, 0.35 [0.14] pg/mL; SPIN, 0.38 [0.29] pg/mL; and A+, TRIAD, 1.08 [0.72] pg/mL, WRAP, 0.94 [0.54] pg/mL, SPIN, 1.43 [0.70] pg/mL) (eFigure 1 in [Supplement 1](#)).

Accuracy in Discriminating Abnormal A β and Tau Pathologies

Plasma p-tau217 demonstrated high accuracy in predicting abnormal A β -PET signal (centiloid >24) in TRIAD (AUC, 0.92; 95% CI, 0.92–0.96) and WRAP (AUC, 0.93; 95% CI, 0.90–0.97) ([Figure 2A](#)). In SPIN, p-tau217 also had high accuracy in predicting abnormal CSF A β 42/40 (AUC, 0.96; 95% CI, 0.92–

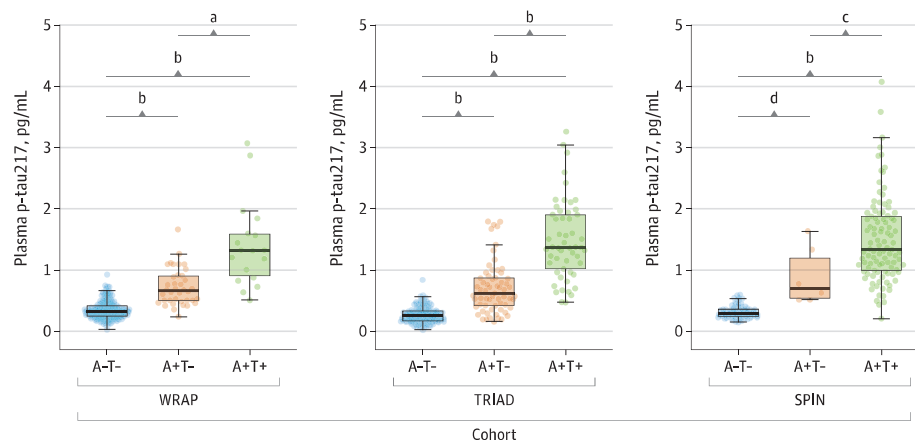
Table 1. Cross-Sectional Demographic Data for the WRAP, TRIAD, and SPIN Cohorts

Characteristic	Mean (SD)		
	WRAP (n = 323)	TRIAD (n = 268)	SPIN (n = 195)
Age, y	65.3 (6.91)	69.4 (7.90)	63.5 (13.8)
Sex, No. (%)			
Female	217 (67.2)	167 (62.3)	120 (61.5)
Male	106 (32.8)	101 (37.7)	75 (38.5)
APOE ϵ 4 carriers, No. (%)	121 (37.5)	96 (35.8)	81 (41.5)
MMSE score	29.2 (1.23)	27.0 (4.72)	26.4 (4.19)
Baseline clinical diagnosis, No. (%)			
No cognitive impairment	309 (95.7)	134 (50.0)	82 (42.1)
Cognitive impairment	14 (4.3)	134 (50.0)	113 (57.9)
Years of education	16.1 (2.62)	15.0 (3.57)	13.4 (5.12)
AT status, No. (%)			
A–T–	209 (78.9)	146 (55.3)	75 (41.2)
A+T–	38 (14.3)	65 (24.6)	6 (3.3)
A+T+	18 (6.8)	53 (20.1)	101 (55.5)
A–T+	1 (0.3)	2 (0.7)	2 (1.0)
Missing data ^a	57 (17.6)	2 (0.7)	11 (5.6)
Plasma p-tau217, pg/mL	0.466 (0.362)	0.636 (0.648)	0.977 (0.766)

Abbreviations: A β , amyloid β ; A+, amyloid-positive; A–, amyloid-negative; CSF, cerebrospinal fluid; MMSE, Mini-Mental State Examination; PET, positron emission tomography; p-tau, phosphorylated tau; SPIN, Sant Pau Initiative on Neurodegeneration; T+, tau-positive; T–, tau-negative; TRIAD, Translational Biomarkers in Aging and Dementia; WRAP, Wisconsin Registry for Alzheimer's Prevention.

^a In the WRAP and TRIAD cohorts, AT status was defined with amyloid and tau

PET. In WRAP, all participants had available A β -PET data (100%), while tau PET was not available for 57 participants (17.6%). In TRIAD, all participants had available A β -PET data (100%), and tau PET was not available for 2 participants (0.7%). In SPIN, all participants had data for amyloid status, which was determined with CSF A β 42/A β 40 in 159 (71.5%) participants or with A β PET in 36 (18.5%) participants. In SPIN, tau status was defined with CSF p-tau181 and was not available for 11 participants (5.6%).

Figure 1. Plasma Phosphorylated Tau 217 (p-Tau217) Levels According to Amyloid β (A) and Tau (T) Profiles

Boxplots show the distribution of p-tau217 concentrations by AT profile for the Wisconsin Registry for Alzheimer's Prevention (WRAP), Translational Biomarkers in Aging and Dementia (TRIAD), and Sant Pau Initiative on Neurodegeneration (SPIN) cohorts. For WRAP and TRIAD, A β and tau were indexed by positron emission tomography. In SPIN, A was indexed by cerebrospinal fluid (CSF) A β 42/40 and T by CSF p-tau181. All comparison *P* values obtained from pairwise contrasts from linear models adjusted for age and sex were less than .001, whereas in the SPIN cohort, 2 comparisons showed *P* < .05. The horizontal line inside each box indicates the median, the outer

bounds of boxes represent lower and upper quartiles, and whiskers extend to the 5th and 95th IQRs; circles indicate observed data points.

^a *P* = .001.

^b *P* < .001.

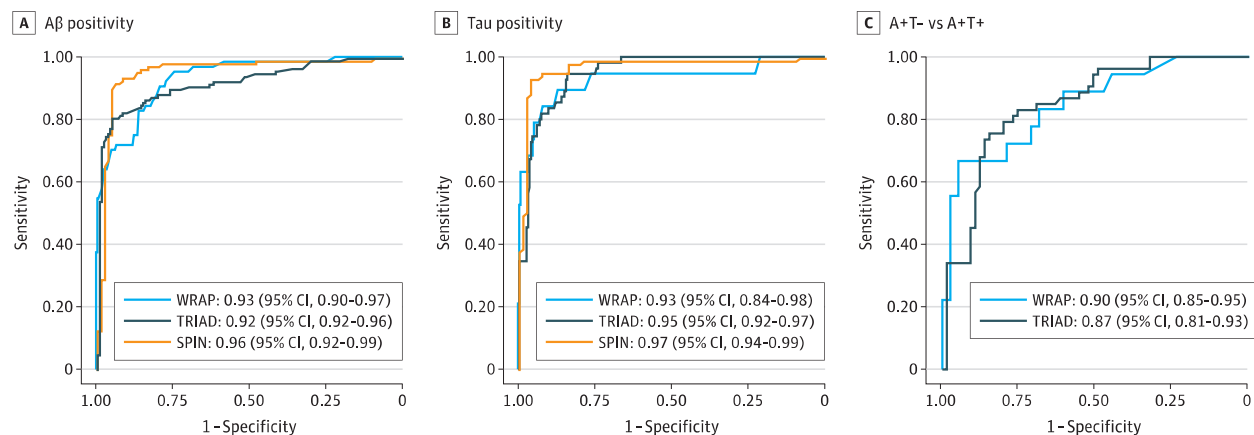
^c A+T– vs A+T+: *P* = .03.

^d A–T– vs A+T–: *P* = .02.

0.99) (Figure 2A). There was equally high accuracy when A β -PET status was determined by visual read (eFigure 2 in Supplement 1). Further, p-tau217 sustained high accuracy when

A β -PET status was defined by differing centiloid values (eg, centiloid >12 and centiloid >37) in TRIAD and WRAP participants (eFigure 3 in Supplement 1).

Figure 2. Accuracy of the Phosphorylated Tau 217 (p-Tau217) Immunoassay in Detecting Amyloid β ($A\beta$) Positivity and Tau (T) Positivity and Discriminating A+T- From A+T+ Individuals



Receiver operating characteristics (ROC) curves for p-tau217 in detecting $A\beta$ positivity and tau positivity and to differentiating $A\beta$ -positive and tau-positive individuals (A+T-) from $A\beta$ -positive and tau-negative (A+T+). For each ROC

curve, the area under the curve is reported alongside 95% CI. For WRAP and TRIAD, $A\beta$ and tau were indexed by positron emission tomography. In SPIN, A was indexed by cerebrospinal fluid (CSF) $A\beta_{42/40}$ and T by CSF p-tau181.

Plasma p-tau217 also exhibited high accuracy for predicting abnormal tau in TRIAD (AUC, 0.95; 95% CI, 0.92-0.97) and WRAP (AUC, 0.93; 95% CI, 0.84-0.98) (Figure 2B). In SPIN, p-tau217 had high accuracy for abnormal CSF p-tau181 (AUC, 0.97; 95% CI, 0.94-0.99). Promisingly, p-tau217 could identify abnormal tau PET signal among amyloid-positive participants (A+T- vs A+T+) in TRIAD (AUC, 0.87; 95% CI, 0.81-0.93) and WRAP (AUC, 0.90; 95% CI, 0.85-0.95) (Figure 2C). Moreover, we observed a gradual increase of plasma p-tau217 across tau-PET-defined Braak stages in TRIAD (eFigure 4 and eTable 3 in Supplement 1).

Comparing p-Tau217 With Imaging and CSF Biomarkers in Identifying AD Pathology

Next, we compared the performance of plasma p-tau217 to CSF and imaging modalities for predicting abnormal $A\beta$ PET and tau PET. This analysis included the maximum number of participants within each biomarker modality. In WRAP, in determining abnormal $A\beta$ PET, plasma p-tau217 outperformed hippocampal atrophy (AUC, 0.52; 95% CI, 0.44-0.60; $P < .001$), tau PET (AUC, 0.72; 95% CI, 0.64-0.80; $P < .001$), and CSF p-tau181 (AUC, 0.75; 95% CI, 0.66-0.84; $P < .001$) but did not differ significantly from CSF $A\beta_{42/40}$ or CSF p-tau181/ $A\beta_{42}$ (eFigure 5A in Supplement 1). Similar findings were observed in TRIAD, where plasma p-tau217 outperformed hippocampal atrophy (AUC, 0.70; 95% CI, 0.63-0.76; $P < .001$) and tau PET (AUC, 0.86; 95% CI, 0.82-0.91; $P = .05$) for detecting abnormal $A\beta$ pathology but did not significantly differ from various CSF biomarkers (eFigure 5B in Supplement 1). In SPIN, plasma p-tau217 outperformed hippocampal volume (AUC, 0.89; 95% CI, 0.83-0.95; $P = .04$) and was comparable with CSF biomarkers (eFigure 5C in Supplement 1).

In predicting abnormal tau-PET burden (eFigure 5D-E in Supplement 1), plasma p-tau217 significantly outperformed hippocampal volume (WRAP AUC, 0.65; 95% CI, 0.50-0.81;

$P = .01$; TRIAD AUC, 0.83; 95% CI, 0.76-0.89; $P = .01$; SPIN AUC, 0.91; 95% CI, 0.86-0.96, $P = .049$). Plasma p-tau217 significantly outperformed CSF p-tau181 in WRAP (AUC, 0.69; 95% CI, 0.66-0.84; $P = .02$) but not TRIAD. Plasma p-tau217 outperformed $A\beta$ PET in TRIAD (AUC, 0.90; 95% CI, 0.86-0.95; $P = .04$), while in WRAP they were comparable (AUC, 0.96; 95% CI, 0.93-0.99; $P = .35$). Plasma p-tau217 showed comparable performance with other measures, except for CSF p-tau217 in SPIN.

Additionally, we conducted comparisons in subsets only including participants with all modalities (WRAP: $n = 131$; TRIAD: $n = 106$; SPIN: $n = 41$), finding no marked differences (eFigure 6 in Supplement 1). Plasma p-tau217 also discriminated A+T- from A+T+ individuals comparably with CSF and imaging biomarkers (eFigure 7 in Supplement 1).

Comparing p-Tau217 With Other Plasma Biomarkers

Plasma p-tau217 alone or p-tau217 plus demographic variables (age, sex, and *APOE* status) outperformed all other plasma biomarkers (p-tau181, p-tau231, $A\beta_{42/40}$, GFAP, and NfL), and their optimal combinations, for predicting both amyloid and tau status in all cohorts (eTables 4 and 5 and eFigure 7 in Supplement 1). A minimal improvement in model metrics of goodness-of-fit (Akaike information criterion) was observed in p-tau217 plus demographic data but not in discriminatory performance. The correlations of plasma p-tau217 with $A\beta$ PET, tau PET, and CSF p-tau217 are shown in eFigures 9 and 10 in Supplement 1.

Reference Ranges for Plasma p-Tau217 With Abnormal $A\beta$ and Tau Pathologies

We first derived a binary reference point for $A\beta$ positivity using the Youden index, derived in WRAP (>0.42 pg/mL) (Table 2 and eFigure 11 in Supplement 1). This reference point was cross-validated in TRIAD ($A\beta$ positivity based on PET) and SPIN ($A\beta$ positivity based on CSF $A\beta_{42/40}$). We next applied a 3-range

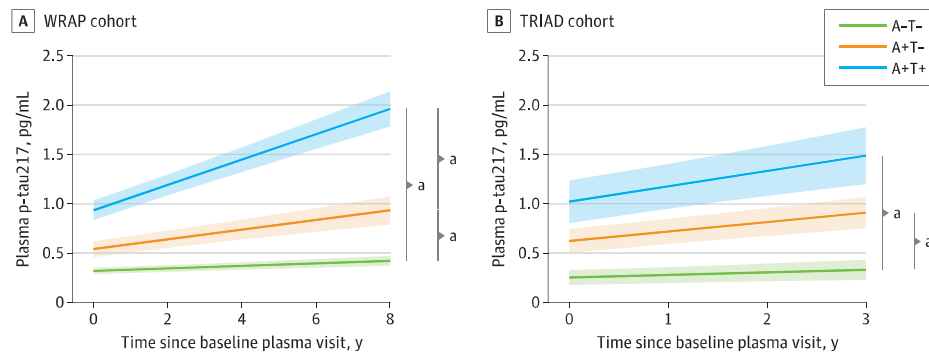
Table 2. Binary Reference and Three-Range Reference for A β Positivity^a

Characteristic	Binary reference for A β positivity: plasma p-tau217 >0.42 pg/mL			Characteristic	Three-range reference for A β positivity: plasma p-tau217 positive >0.63 pg/mL, plasma p-tau217 negative <0.40 pg/mL		
	WRAP	TRIAD	SPIN		WRAP	TRIAD	SPIN
No. of participants	323	268	195	No. of participants	323	268	195
A β -positive, No. (%)	64 (19.8)	120 (44.8)	110 (56.4)	A β -positive, No. (%)	64 (19.8)	120 (44.8)	110 (56.4)
Plasma p-tau217 status positive, No. (%)	127 (39.3)	124 (46.3)	127 (65.1)	Plasma p-tau217 positive, No. (%)	58 (18.0)	86 (32.1)	106 (54.4)
				Plasma p-tau217 intermediate, No. (%)	74 (22.9)	43 (16.0)	24 (12.3)
				Plasma p-tau217 negative, No. (%)	191 (59.1)	139 (51.9)	65 (33.3)
Sensitivity, %	95.3	85.0	98.2	Sensitivity of lower reference point, %	95.3	86.7	98.2
Specificity, %	74.5	85.1	77.6	Specificity of upper reference point, %	94.9	98.6	94.1
PPA, %	48.0	82.3	85.0	PPA, upper reference point, %	77.6	97.7	95.3
NPA, %	98.5	87.5	97.1	NPA, lower reference point, %	98.4	88.5	96.9
OPA, %	78.6	85.1	89.2	OPA for p-tau217 positive and negative, %	93.6	92.0	95.9

Abbreviations: A β , amyloid β ; NPA, negative percent agreement; OPA, overall percent agreement; PPA, positive percent agreement; p-tau217, phosphorylated tau 217; SPIN, Sant Pau Initiative on Neurodegeneration; TRIAD, Translational Biomarkers in Aging and Dementia; WRAP, Wisconsin Registry for Alzheimer's Prevention.

^a The table shows key metrics for the evaluation of a binary and 3-range reference point for A β positivity. The binary reference point was based in the Youden index derived in the WRAP cohort and cross-validated in the TRIAD

and SPIN cohorts. Three-range reference points for A β positivity were derived in WRAP based on 95% sensitivity (lower reference point) and 95% specificity (upper reference point) and cross-validated in TRIAD and SPIN. The OPA for p-tau217 negative and positive indicates the combined NPA of those below the lower reference point and the PPA for those above the upper reference point, not accounting for the intermediate zone. In WRAP and TRIAD, A β positivity was determined with A β positron emission tomography, whereas in SPIN, A β positivity was determined with cerebrospinal fluid A β 42/A β 40.

Figure 3. Longitudinal Trajectories of Plasma Phosphorylated Tau 217 (p-Tau217) Values According to Amyloid β (A) and Tau (T) Status by Positron Emission Tomography (PET)

Trajectory plots indicate the mean longitudinal trajectories (solid line) of plasma p-tau217 and associated 95% CIs (shading), estimated with linear mixed-effects models. Trajectories are stratified based on PET-defined amyloid and tau groups (A-T-, A-T+, A+T+), modeled with an interaction term between AT status and time. Models included random slopes and intercepts for each participant and

were adjusted for years of education, sex, and cognitive status at first visit. *P* values represent post hoc pairwise comparing the slopes for group \times time interactions.

^a *P* < .001.

approach,⁴¹ creating lower (95% sensitivity, <0.4 pg/mL) and upper (95% specificity, >0.63 pg/mL) reference points in WRAP (Table 2 and eFigure 11 in Supplement 1). This approach improved the positive percent agreement (TRIAD: 97.7%; SPIN: 95.3%) while maintaining a similar negative percent agreement. The “intermediate” zone (p-tau217 levels 0.4-0.63 pg/mL), which could in practice be referred to confirmatory testing with CSF or PET, was largest in WRAP (22.9%), as expected because of lower A β -positivity prevalence, and smaller in TRIAD (15.8%) and SPIN (13.0%). A binary reference point for tau positivity is demonstrated in eTable 6 in Supplement 1.

Longitudinal Changes in Plasma p-Tau217 Levels

In up to 8 years of longitudinal sampling in WRAP (mean [SD], 5.22 [1.41] years), the A+T+ group demonstrated a significantly higher annual increase rate in plasma p-tau217 levels compared with the A-T- group (β estimate, 0.12; 95% CI, 0.10-0.13; *P* < .001). The A+T- group also demonstrated a significantly higher annual rate of change in plasma p-tau217 compared with A-T- (β estimate, 0.04; 95% CI, 0.02-0.05; *P* < .001). Slope comparisons showed the A+T+ group to have a significantly higher rate compared with the A+T- group (β estimate, 0.08; 95% CI, 0.06-0.09; *P* < .001) (Figure 3A). In

TRIAD, similar results were observed, even with a shorter follow-up (mean [SD], 1.90 [0.61] years) (Figure 3B).

Discussion

In 3 independent cohorts, this study presents the performance of a commercially available plasma assay targeting p-tau217. Our findings demonstrate high accuracy in identifying abnormal A β and tau pathologies, comparable with CSF measures and superior to brain atrophy assessments. A 3-range approach demonstrated high negative and positive concordance with A β status, with approximately 20% of individuals in an intermediate zone that would require confirmatory CSF or PET, as previously proposed.⁴¹ Longitudinally, this assay exhibited increases solely in individuals with A β pathology at baseline, and those with both elevated A β and tau pathologies demonstrated a greater rate of annual increase.

Plasma biomarkers have emerged as important tools for AD evaluation. Their specificity to underlying pathology offers great potential for rapid screening, reducing the dependence on advanced confirmatory tests. A clinical AD diagnosis often lacks sensitivity and specificity, resulting in many individuals with MCI (40%-60%) or dementia (20%-30%) who exhibit typical AD symptoms lacking A β pathology.¹ In primary care, it is estimated that more than 50% of patients with cognitive impairment remain undiagnosed or incorrectly diagnosed because of the lack of accessible and cost-effective tools.¹ Thus, blood biomarkers are set to revolutionize clinical care by providing objective biomarker-based information. As anti-A β trials move toward targeting a preclinical population with lower prevalence of A β abnormalities,⁴² a cost-effective screening strategy becomes paramount. In previous studies, targeting p-tau217 in blood has yielded the best results as a diagnostic and prognostic tool that tracks longitudinal change.

There has been limited access to immunoassays targeting p-tau217 for broader evaluation. This study evaluates a commercially available assay for p-tau217 that exhibits similar advantageous features to those previously reported. Consistent with Palmqvist et al,¹⁹ this assay outperformed magnetic resonance imaging and showed comparable performance with CSF biomarkers in detecting A β PET positivity and tau PET positivity.⁴³ Further, significant superiority to other plasma p-tau epitopes, A β 42/40, NfL, and GFAP and their optimal combinations was shown. When combined with *APOE* status and age, only modest improvements in diagnostic accuracy were observed, whereas other plasma biomarkers relied more heavily on these variables for their performance. Notably, the assay demonstrated high accuracy in identifying tau pathology within A β -positive individuals. This is particularly important as anti-amyloid therapies may be less effective in patients with advanced tau pathology.^{44,45} Our findings suggest that

p-tau217 has the potential to identify elevated tau-PET uptake and promising utility in early AD trials. Our study did not define elevated tau in the same manner as the TRAILBLAZER trials but warrants further studies applying p-tau217 to intermediate-tau trial inclusion designs.⁴⁵

Integrating blood biomarkers into diagnostic workflows remains challenging despite their promise. Therefore, this study also aimed to establish reference points based on abnormal A β pathology. The study evaluated a 3-range approach as recommended by Alzheimer's Association guidelines³⁹ and recently proposed by Brum et al,⁴¹ which suggests confirmatory testing for patients with uncertain plasma p-tau217 results. Evaluating this approach using a commercial immunoassay showed high negative and positive predictive accuracy at screening, indicating only 12% to 23% of individuals warranted advanced testing, depending on the clinical stage. However, we acknowledge that the cohorts used in this study may not fully represent real-world clinical settings. Importantly, the reported negative and positive predictive accuracy of these reference ranges can vary based on the prevalence of the outcome in the target population. Lower positive percent agreements are expected in settings with lower prevalence,⁴⁶ as observed in the preclinical WRAP cohort compared with the higher prevalence seen in TRIAD and SPIN cohorts. Therefore, future studies should prospectively evaluate plasma p-tau217 reference points in memory clinic populations with wider diversity to ensure optimized implementation, accounting for higher rates of important comorbidities.⁴⁷

Limitations

This study is not without limitations. First, one-third of our participants were classified as cognitively impaired, and this may limit our generalizability to the symptomatic stages of the disease but highlights promise for future preclinical recruitment. In addition, our results cannot be generalized to all individuals without detailed examination in cohorts with a larger representation of diverse ethnic populations. We acknowledge that CSF p-tau181, utilized as a T marker in SPIN, is not interchangeable with other methods that more accurately reflect neurofibrillary tangle pathology.⁴⁸

Conclusions

This study highlights the effectiveness of a commercially available plasma p-tau217 assay in identifying AD pathology. Our findings demonstrate the substantial reduction of confirmatory testing, by approximately 80%, by implementing a 3-range approach for A β positivity based on plasma p-tau217. These results emphasize the important role of plasma p-tau217 as an initial screening tool in the management of cognitive impairment by underlining those who may benefit from anti-amyloid immunotherapies.

ARTICLE INFORMATION

Accepted for Publication: November 10, 2023.

Published Online: January 22, 2024.

doi:10.1001/jamaneurol.2023.5319

Open Access: This is an open access article distributed under the terms of the [CC-BY License](#).
© 2024 Ashton NJ et al. *JAMA Neurology*.

Author Affiliations: Department of Psychiatry and Neurochemistry, Institute of Neuroscience & Physiology, Sahlgrenska Academy at the University of Gothenburg, Mölndal, Sweden (Ashton, Brum, Di Molfetta, Benedet, Arslan, Montoliu-Gaya, Lantero-Rodriguez, Blennow, Zetterberg); King's College London, Institute of Psychiatry, Psychology and Neuroscience Maurice Wohl Institute Clinical Neuroscience Institute, London, United Kingdom (Ashton); NIHR Biomedical Research Centre for Mental Health and Biomedical Research Unit for Dementia at South London and Maudsley NHS Foundation, London, United Kingdom (Ashton); Centre for Age-Related Medicine, Stavanger University Hospital, Stavanger, Norway (Ashton); Graduate Program in Biological Sciences: Biochemistry, Universidade Federal do Rio Grande do Sul (UFRGS), Porto Alegre, Brazil (Brum); Wisconsin Alzheimer's Institute, School of Medicine and Public Health, University of Wisconsin-Madison, Madison (Jonaitis, Langhough, Carlsson, Johnson); Wisconsin Alzheimer's Disease Research Center, School of Medicine and Public Health, University of Wisconsin-Madison, Madison (Jonaitis, Langhough, Cody, Wilson, Carlsson, Johnson, Zetterberg); Department of Medicine, Division of Geriatrics and Gerontology, School of Medicine and Public Health, University of Wisconsin-Madison, Madison (Jonaitis, Langhough, Wilson, Carlsson); Geriatric Research Education and Clinical Center of the Wm. S. Middleton Memorial Veterans Hospital, Madison, Wisconsin (Carlsson); ADx NeuroSciences, Ghent, Belgium (Vanmechelen); Translational Neuroimaging Laboratory, McGill University Research Centre for Studies in Aging, Alzheimer's Disease Research Unit, Douglas Research Institute, Le Centre Intégré Universitaire de Santé et de Services Sociaux (CIUSSS) de l'Ouest-de-l'Île-de-Montréal (Rahmouni, Tissot, Stevenson, Servaes, Theriault, Rosa-Neto); Department of Neurology and Neurosurgery, Psychiatry and Pharmacology and Therapeutics, McGill University, Montreal, Quebec, Canada (Rahmouni, Tissot, Stevenson, Servaes, Theriault, Rosa-Neto); Department of Psychiatry, University of Pittsburgh, Pittsburgh, Pennsylvania (Pascoal); Department of Neurology, University of Pittsburgh, Pittsburgh, Pennsylvania (Pascoal); Department of Neurology, Institut d'Investigacions Biomèdiques Sant Pau, Hospital de Sant Pau, Universitat Autònoma de Barcelona, Hospital de la Santa Creu i Sant Pau, Barcelona, Catalunya (Lleó, Alcolea, Fortea); Centro de Investigación Biomédica en Red en Enfermedades Neurodegenerativas, CIBERNED, Madrid, Spain (Lleó, Alcolea, Fortea); ALZpath, Carlsbad, California (Jeromin); Clinical Neurochemistry Laboratory, Sahlgrenska University Hospital, Mölndal, Sweden (Blennow, Zetterberg); Department of Neurodegenerative Disease, UCL Institute of Neurology, London, United Kingdom (Zetterberg); UK Dementia Research Institute at UCL, London, United Kingdom (Zetterberg); Hong Kong Center for Neurodegenerative Diseases, Clear Water Bay, Hong Kong, China (Zetterberg).

Author Contributions: Dr Ashton had full access to all of the data in the study and takes responsibility for the integrity of the data and the accuracy of the data analysis. Dr Ashton and Mr Brum contributed equally as co-first authors.

Concept and design: Ashton, Brum, Benedet, Vanmechelen, Montoliu-Gaya, Servaes, Theriault, Pascoal, Johnson, Blennow, Zetterberg.

Acquisition, analysis, or interpretation of data:

Ashton, Brum, Di Molfetta, Benedet, Arslan, Jonaitis, Langhough, Cody, Wilson, Carlsson, Montoliu-Gaya, Lantero-Rodriguez, Rahmouni, Tissot, Stevenson, Theriault, Pascoal, Lleó, Alcolea, Fortea, Rosa-Neto, Johnson, Jeromin, Blennow, Zetterberg.

Drafting of the manuscript: Ashton, Brum, Arslan, Johnson.

Critical review of the manuscript for important intellectual content: Ashton, Brum, Di Molfetta,

Benedet, Jonaitis, Langhough, Cody, Wilson, Carlsson, Vanmechelen, Montoliu-Gaya, Lantero-Rodriguez, Rahmouni, Tissot, Stevenson, Servaes, Theriault, Pascoal, Lleó, Alcolea, Fortea, Rosa-Neto, Johnson, Jeromin, Blennow, Zetterberg.

Statistical analysis: Ashton, Brum, Jonaitis, Theriault.

Obtained funding: Tissot, Fortea, Rosa-Neto, Johnson, Zetterberg.

Administrative, technical, or material support:

Ashton, Benedet, Jonaitis, Cody, Wilson, Carlsson, Vanmechelen, Montoliu-Gaya, Rahmouni, Tissot, Stevenson, Servaes, Theriault, Lleó, Fortea, Rosa-Neto, Jeromin, Zetterberg.

Supervision: Ashton, Fortea, Blennow.

Conflict of Interest Disclosures: Dr Jonaitis reported grants from National Institutes of Health and tau tracer from Cerveau during the conduct of the study. Dr Langhough reported grants from the National Institutes of Health (NIH) during the conduct of the study. Dr Cody reported grants from NIH during the conduct of the study. Dr Wilson reported grants from University of Wisconsin-Madison during the conduct of the study. Dr Carlsson reported grants from NIH during the conduct of the study. Dr Lleó reported personal fees from Fujirebio-Europe, Roche, Biogen, Lilly, and Nutricia outside the submitted work and having had a patent for markers of synaptopathy in neurodegenerative disease licensed to ADx. Dr Alcolea reported grants from Fondo de Investigaciones Sanitarias, Carlos III Health Institute, and Departament de Salut de la Generalitat de Catalunya during the conduct of the study; advisory board services and/or speaker honoraria from Fujirebio-Europe, Roche, Nutricia, Krka Farmacéutica, Grifols, Lilly, Zambon, Esteve, and Neuraxpharm outside the submitted work; and having had a patent for EPI8382175.0 licensed to ADx. Dr Fortea reported grants from Fondo de Investigaciones Sanitarias (FIS), Instituto de Salud Carlos III, NIH, and Horizon 2020 (European Commission) during the conduct of the study; personal fees from Roche, Novo Nordisk, Esteve, Biogen, Laboratorios Carnot, LMI, AC Immune, Alzheon, Lundbeck, and Lilly; outside the submitted work; and having had a patent issued for WO2019175379 A1, "Markers of synaptopathy in neurodegenerative disease," with royalties paid. Dr Rosa-Neto reported funding from the Weston Brain Institute, Canadian Institutes of Health Research (MOP-11-51-31, FRN, 152985); salary award from the Fonds de Recherche du Québec-Santé and Colin J. Adair Charitable Foundation; serving on the advisory board for Novo Nordisk, Eisai, and Eli Lilly; and serving as a consultant for Eisai and Cerveau Radiopharmaceuticals. Dr Johnson reported grants from NIH and advisory board fees from ALZpath during the conduct of the study, grants from Cerveau Technologies paid to his institution outside of the submitted work, and advisory board fees from Roche Diagnostics and Prothena outside the

submitted work. Dr Jeromin reported equity from ALZpath and having had a patent pending for ALZpath. Dr Blennow reported having served as a consultant and at advisory boards for Acumen, ALZpath, BioArctic, Biogen, Eisai, Lilly, Moleac, Novartis, Ono Pharma, Prothena, Roche Diagnostics, and Siemens Healthineers; having served at data monitoring committees for Julius Clinical and Novartis; having given lectures, produced educational materials, and participated in educational programs for AC Immune, Biogen, Celdara Medical, Eisai, and Roche Diagnostics; and being a co-founder of Brain Biomarker Solutions in Gothenburg AB (BBS), which is a part of the GU Ventures Incubator Program. Dr Zetterberg reported advisory board fees from AbbVie, Acumen, Alector, Alzinova, ALZpath, Annexon, Apellis, Artery Therapeutics, AZTherapies, Cognito Therapeutics, CogRx, Denali, Eisai, Nervegen, Novo Nordisk, Optoceutics, Passage Bio, Pinteon Therapeutics, Prothena, Red Abbey Labs, reMYND, Roche, Samumed, Siemens Healthineers, Triplet Therapeutics, and Wave Scientific; sponsored lecture fees from Cellecticon, Fujirebio, Alzecure, Biogen, and Roche; and being a co-founder and stockholder for Brain Biomarker Solutions in Gothenburg AB outside the submitted work. No other disclosures were reported.

Funding/Support: ALZpath provided the materials for this study at no cost. This work was supported by National Institutes of Health (NIH) grants (1R01AG056850-01A1; R21AG056974 and R01AG061566 to Dr Lleó) and Departament de Salut de la Generalitat de Catalunya, Pla Estratègic de Recerca i Innovació en Salut (SLT006/17/00119 to Dr Fortea; SLT002/16/00408 to Dr Lleó; SLT006/17/125 to Dr Alcolea). It was also supported by Horizon 2020-Research and Innovation Framework Programme from the European Union (H2020-SCI-BHC-2018-2020 to Dr Fortea). Drs Lleó, Alcolea, and Fortea were supported by the Fondo de Investigaciones Sanitarias, Carlos III Health Institute (PI20/O1330 to Dr Lleó, PI18/O0435 and INT19/O0016 to Dr Alcolea, PI20/O1473 to Dr Fortea) and the Centro de Investigación Biomédica en Red sobre Enfermedades Neurodegenerativas (CIBERNED) Program I. Dr Blennow is supported by the Swedish Research Council (2017-00915 and 2022-00732), Swedish Alzheimer Foundation (AF-930351, AF-939721, and AF-968270), Hjärfonden, Sweden (FO2017-0243 and ALZ2022-0006), Swedish state under the agreement between the Swedish government and the County Councils, ALF-agreement (ALFGBG-715986 and ALFGBG-965240), European Union Joint Program for Neurodegenerative Disorders (JPND2019-466-236), Alzheimer's Association 2021 Zenith Award (ZEN-21-848495), and Alzheimer's Association 2022-2025 grant (SG-23-1038904 QC). Dr Zetterberg is a Wallenberg Scholar supported by grants from the Swedish Research Council (2022-01018 and 2019-02397), European Union's Horizon Europe research and innovation programme (grant agreement 101053962), Swedish State Support for Clinical Research (ALFGBG-71320), Alzheimer Drug Discovery Foundation (201809-2016862), AD Strategic Fund, and Alzheimer's Association (ADSF-21-831376-C, ADSF-21-831381-C, and ADSF-21-831377-C), Bluefield Project, Olav Thon Foundation, Erling-Persson Family Foundation, Stiftelsen för Gamla Tjänarinnor, Hjärfonden, Sweden (FO2022-0270), European Union's

Horizon 2020 research and innovation programme (Marie Skłodowska-Curie grant agreement 860197, MIRIAD), European Union Joint Programme–Neurodegenerative Disease Research (JPND2021-00694), National Institute for Health and Care Research University College London Hospitals Biomedical Research Centre, and UK Dementia Research Institute at UCL (UKDRI-1003). The Wisconsin Registry for Alzheimer's Prevention is supported by NIH grants AG027161 and AG021155.

Role of the Funder/Sponsor: ALZpath reviewed the manuscript before submission. Otherwise, the funders had no role in the design and conduct of the study; collection, management, analysis, and interpretation of the data; preparation, review, or approval of the manuscript; and decision to submit the manuscript for publication.

Data Sharing Statement: See Supplement 2.

Additional Contributions: We thank Jeroen Vanbrabant, PhD, and Erik Stoops, PhD, from ADx Neuroscience, now Fujirebio, and the accelerator lab at Quanterix, for the initial prototyping of the ALZpath pTau217 assay.

REFERENCES

- Hansson O. Biomarkers for neurodegenerative diseases. *Nat Med*. 2021;27(6):954-963. doi:10.1038/s41591-021-01382-x
- Hansson O, Blennow K, Zetterberg H, Dage J. Blood biomarkers for Alzheimer's disease in clinical practice and trials. *Nat Aging*. 2023;3(5):506-519. doi:10.1038/s43587-023-00403-3
- Ashton NJ, Janelidze S, Al Khleifat A, et al. A multicentre validation study of the diagnostic value of plasma neurofilament light. *Nat Commun*. 2021;12(1):3400. doi:10.1038/s41467-021-23620-z
- Benedet AL, Milà-Alomà M, Vrillon A, et al; Translational Biomarkers in Aging and Dementia (TRIAD) study, Alzheimer's and Families (ALFA) study, and BioCogBank Paris Lariboisière cohort. Differences between plasma and cerebrospinal fluid glial fibrillary acidic protein levels across the Alzheimer disease continuum. *JAMA Neurol*. 2021;78(12):1471-1483. doi:10.1001/jamaneurol.2021.3671
- Hampel H, Hardy J, Blennow K, et al. The amyloid- β pathway in Alzheimer's disease. *Mol Psychiatry*. 2021;26(10):5481-5503. doi:10.1038/s41380-021-01249-0
- Schindler SE, Bollinger JG, Ovod V, et al. High-precision plasma β -amyloid 42/40 predicts current and future brain amyloidosis. *Neurology*. 2019;93(17):e1647-e1659. doi:10.1212/WNL.0000000000008081
- Karikari TK, Ashton NJ, Brinkmalm G, et al. Blood phospho-tau in Alzheimer disease: analysis, interpretation, and clinical utility. *Nat Rev Neurol*. 2022;18(7):400-418. doi:10.1038/s41582-022-00665-2
- Benedet AL, Brum WS, Hansson O, et al; Alzheimer's Disease Neuroimaging Initiative. The accuracy and robustness of plasma biomarker models for amyloid PET positivity. *Alzheimers Res Ther*. 2022;14(1):26. doi:10.1186/s13195-021-00942-0
- Cullen NC, Janelidze S, Mattsson-Carlsson N, et al. Test-retest variability of plasma biomarkers in Alzheimer's disease and its effects on clinical prediction models. *Alzheimers Dement*. Published online June 14, 2022. doi:10.1002/alz.12706
- Ashton NJ, Puig-Pijoan A, Milà-Aloma M, et al. Plasma and CSF biomarkers in a memory clinic: head-to-head comparison of phosphorylated tau immunoassays. *Alzheimers Dement*. 2023;19(5):1913-1924. doi:10.1002/alz.12841
- O'Connor A, Karikari TK, Poole T, et al. Plasma phospho-tau181 in presymptomatic and symptomatic familial Alzheimer's disease: a longitudinal cohort study. *Mol Psychiatry*. 2021;26(10):5967-5976. doi:10.1038/s41380-020-0838-x
- Lleó A, Zetterberg H, Pegueroles J, et al. Phosphorylated tau181 in plasma as a potential biomarker for Alzheimer's disease in adults with Down syndrome. *Nat Commun*. 2021;12(1):4304. doi:10.1038/s41467-021-24319-x
- Janelidze S, Christian BT, Price J, et al. Detection of brain tau pathology in Down syndrome using plasma biomarkers. *JAMA Neurol*. 2022;79(8):797-807. doi:10.1001/jamaneurol.2022.1740
- Fortea J, Zaman SH, Hartley S, Rafii MS, Head E, Carmona-Iragui M. Alzheimer's disease associated with Down syndrome: a genetic form of dementia. *Lancet Neurol*. 2021;20(11):930-942. doi:10.1016/S1474-4422(21)00245-3
- Mattsson-Carlsson N, Janelidze S, Bateman RJ, et al. Soluble P-tau217 reflects amyloid and tau pathology and mediates the association of amyloid with tau. *EMBO Mol Med*. 2021;13(6):e14022. doi:10.15252/emmm.202114022
- Salvadó G, Ossenkoppele R, Ashton NJ, et al. Specific associations between plasma biomarkers and postmortem amyloid plaque and tau tangle loads. *EMBO Mol Med*. 2023;15(5):e17123. doi:10.15252/emmm.202217123
- Lantero Rodríguez J, Karikari TK, Suárez-Calvet M, et al. Plasma p-tau181 accurately predicts Alzheimer's disease pathology at least 8 years prior to post-mortem and improves the clinical characterisation of cognitive decline. *Acta Neuropathol*. 2020;140(3):267-278. doi:10.1007/s00401-020-02195-x
- Ashton NJ, Pascoal TA, Karikari TK, et al. Plasma p-tau231: a new biomarker for incipient Alzheimer's disease pathology. *Acta Neuropathol*. 2021;141(5):709-724. doi:10.1007/s00401-021-02275-6
- Palmqvist S, Janelidze S, Quiroz YT, et al. Discriminative accuracy of plasma phospho-tau217 for Alzheimer disease vs other neurodegenerative disorders. *JAMA*. 2020;324(8):772-781. doi:10.1001/jama.2020.12134
- Janelidze S, Mattsson N, Palmqvist S, et al. Plasma P-tau181 in Alzheimer's disease: relationship to other biomarkers, differential diagnosis, neuropathology and longitudinal progression to Alzheimer's dementia. *Nat Med*. 2020;26(3):379-386. doi:10.1038/s41591-020-0755-1
- Montoliu-Gaya L, Benedet AL, Tissot C, et al. Mass spectrometric simultaneous quantification of tau species in plasma shows differential associations with amyloid and tau pathologies. *Nat Aging*. 2023;3(6):661-669. doi:10.1038/s43587-023-00405-1
- Janelidze S, Bali D, Ashton NJ, et al. Head-to-head comparison of 10 plasma phospho-tau assays in prodromal Alzheimer's disease. *Brain*. 2023;146(4):1592-1601. doi:10.1093/brain/awac333
- Hijssen EH, La Joie R, Strom A, et al; Advancing Research and Treatment for Frontotemporal Lobar Degeneration investigators. Plasma phosphorylated tau 217 and phosphorylated tau 181 as biomarkers in Alzheimer's disease and frontotemporal lobar degeneration: a retrospective diagnostic performance study. *Lancet Neurol*. 2021;20(9):739-752. doi:10.1016/S1474-4422(21)00214-3
- Ashton NJ, Janelidze S, Mattsson-Carlsson N, et al. Differential roles of A β 42/40, p-tau231 and p-tau217 for Alzheimer's trial selection and disease monitoring. *Nat Med*. 2022;28(12):2555-2562. doi:10.1038/s41591-022-02074-w
- Jonaitis EM, Janelidze S, Cody KA, et al. Plasma phosphorylated tau 217 in preclinical Alzheimer's disease. *Brain Commun*. 2023;5(2):fcad057. doi:10.1093/braincomms/fcad057
- Johnson SC, Kosik RL, Jonaitis EM, et al. The Wisconsin Registry for Alzheimer's Prevention: a review of findings and current directions. *Alzheimers Dement (Amst)*. 2017;10:130-142. doi:10.1016/j.dadm.2017.11.007
- Alcolea D, Clarimón J, Carmona-Iragui M, et al. The Sant Pau Initiative on Neurodegeneration (SPIN) cohort: a data set for biomarker discovery and validation in neurodegenerative disorders. *Alzheimers Dement (N Y)*. 2019;5:597-609. doi:10.1016/j.trci.2019.09.005
- Cselényi Z, Jönghagen ME, Forsberg A, et al. Clinical validation of 18F-AZD4694, an amyloid- β -specific PET radioligand. *J Nucl Med*. 2012;53(3):415-424. doi:10.2967/jnumed.111.094029
- Pascoal TA, Shin M, Kang MS, et al. In vivo quantification of neurofibrillary tangles with [18 F]MK-6240. *Alzheimers Res Ther*. 2018;10(1):74. doi:10.1186/s13195-018-0402-y
- Johnson SC, Christian BT, Okonkwo OC, et al. Amyloid burden and neural function in people at risk for Alzheimer's disease. *Neurobiol Aging*. 2014;35(3):576-584. doi:10.1016/j.neurobiolaging.2013.09.028
- Beththausen TJ, Kosik RL, Jonaitis EM, et al. Amyloid and tau imaging biomarkers explain cognitive decline from late middle-age. *Brain*. 2020;143(1):320-335. doi:10.1093/brain/awz378
- Beththausen TJ, Cody KA, Zammit MD, et al. In vivo characterization and quantification of neurofibrillary tau PET radioligand 18 F-MK-6240 in humans from Alzheimer disease dementia to young controls. *J Nucl Med*. 2019;60(11):93-99. doi:10.2967/jnumed.118.209650
- Ashton NJ, Benedet AL, Pascoal TA, et al. Cerebrospinal fluid p-tau231 as an early indicator of emerging pathology in Alzheimer's disease. *EBioMedicine*. 2022;76:103836. doi:10.1016/j.ebiom.2022.103836
- Therriault J, Pascoal TA, Benedet AL, et al. Frequency of biologically defined Alzheimer disease in relation to age, sex, APOE ϵ 4, and cognitive impairment. *Neurology*. 2021;96(7):e975-e985. doi:10.1212/WNL.00000000000011416
- Therriault J, Benedet AL, Pascoal TA, et al. Determining amyloid- β positivity using 18 F-AZD4694 PET imaging. *J Nucl Med*. 2021;62(2):247-252. doi:10.2967/jnumed.120.245209
- Alcolea D, Pegueroles J, Muñoz L, et al. Agreement of amyloid PET and CSF biomarkers for Alzheimer's disease on Lumipulse. *Ann Clin Transl*

Neurol. 2019;6(9):1815-1824. doi:10.1002/acn3.50873

37. Van Hulle C, Jonaitis EM, Betthauser TJ, et al. An examination of a novel multipanel of CSF biomarkers in the Alzheimer's disease clinical and pathological continuum. *Alzheimers Dement.* 2021;17(3):431-445. doi:10.1002/alz.12204

38. Jani D, Allinson J, Berisha F, et al. Recommendations for use and fit-for-purpose validation of biomarker multiplex ligand binding assays in drug development. *AAPS J.* 2016;18(1):1-14. doi:10.1208/s12248-015-9820-y

39. Hansson O, Edelmayer RM, Boxer AL, et al. The Alzheimer's Association appropriate use recommendations for blood biomarkers in Alzheimer's disease. *Alzheimers Dement.* 2022;18(12):2669-2686. doi:10.1002/alz.12756

40. Rothman KJ. No adjustments are needed for multiple comparisons. *Epidemiology.* 1990;1(1):43-46. doi:10.1097/00001648-199001000-00010

41. Brum WS, Cullen NC, Janelidze S, et al. A two-step workflow based on plasma p-tau217 to screen for amyloid β positivity with further confirmatory testing only in uncertain cases. *Nat Aging.* 2023;3(9):1079-1090. doi:10.1038/s43587-023-00471-5

42. Jansen WJ, Janssen O, Tijms BM, et al; Amyloid Biomarker Study Group. Prevalence estimates of amyloid abnormality across the Alzheimer disease clinical spectrum. *JAMA Neurol.* 2022;79(3):228-243. doi:10.1001/jamaneurol.2021.5216

43. Barthélemy NR, Saef B, Li Y, et al. CSF tau phosphorylation occupancies at T217 and T205 represent improved biomarkers of amyloid and tau pathology in Alzheimer's disease. *Nat Aging.* 2023;3(4):391-401. doi:10.1038/s43587-023-00380-7

44. Lilly Investors. Lilly's donanemab significantly slowed cognitive and functional decline in phase 3 study of early Alzheimer's disease. Accessed June

18, 2023. <https://investor.lilly.com/news-releases/news-release-details/lillys-donanemab-significantly-slowed-cognitive-and-functional>

45. Mintun MA, Wessels AM, Sims JR. Donanemab in early Alzheimer's disease. [Reply]. *N Engl J Med.* 2021;385(7):667. doi:10.1056/NEJMc2109455

46. Vecchio TJ. Predictive value of a single diagnostic test in unselected populations. *N Engl J Med.* 1966;274(21):1171-1173. doi:10.1056/NEJM196605262742104

47. Mielke MM, Dage JL, Frank RD, et al. Performance of plasma phosphorylated tau 181 and 217 in the community. *Nat Med.* 2022;28(7):1398-1405. doi:10.1038/s41591-022-01822-2

48. Mattsson-Carlsson N, Leuzy A, Janelidze S, et al. The implications of different approaches to define AT(N) in Alzheimer disease. *Neurology.* 2020;94(21):e2233-e2244. doi:10.1212/WNL.0000000000009485