

Johnson & Johnson  
MedTech

# NUVISION™ NAV Ultrasound Catheter



Visualize

Efficiency

Versatility

Integration

Patient

Ordering



# Transforming ultrasound. Elevating visualization. Advancing electrophysiology.

Only NUVISION™ NAV Ultrasound Catheter seamlessly integrates 4D ICE ultrasound with the CARTO™ 3 System, the world's leading cardiac mapping system, to provide real-time high-definition tissue visualization.

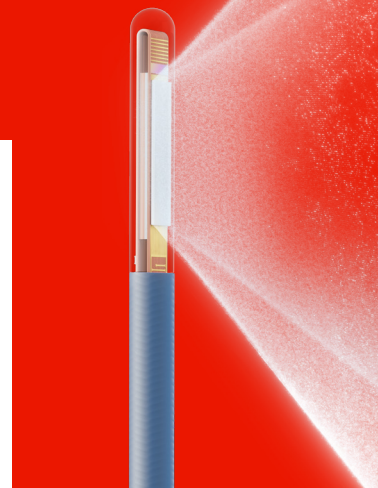
By elevating integration to include 4D ICE, physicians can confidently and efficiently navigate procedures with a new level of visualization, only from Johnson & Johnson MedTech, your expert partner in ICE.\*

\*When compared to 2D ultrasound.



# Experience the best of both worlds

With CARTO™ 3 System integration, the single operator view and digital steering of the NUVISION™ NAV Catheter image through the remote user interface allows for a hands-free ICE catheter workflow.\*



[See animation →](#)

## Multiplanar imaging

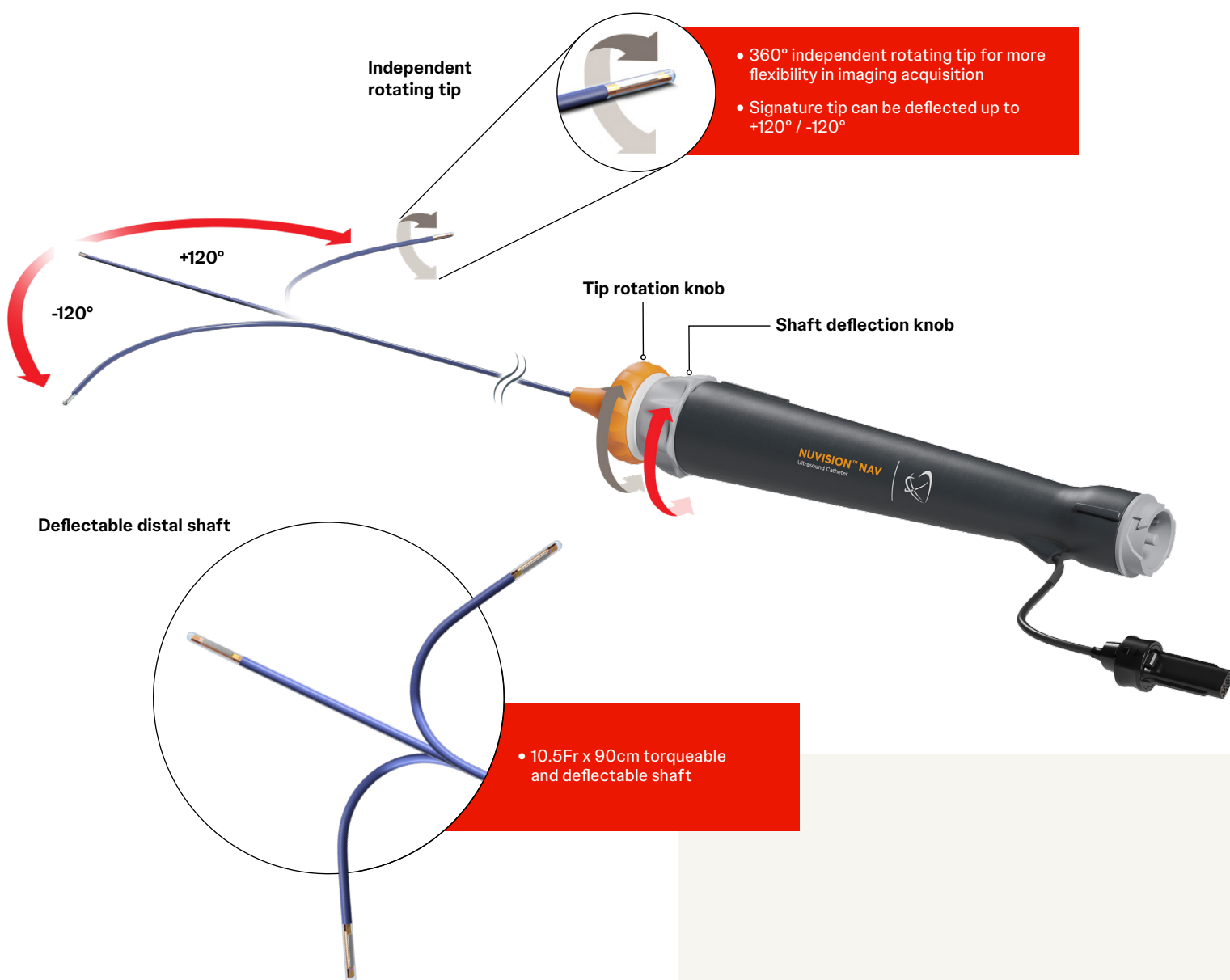
- 840 elements phased-array
- Wide 90° by 90° field of view with fast volume rates
- Azimuthal, elevation, coronal planes
- Ultrasound penetration depth up to 15cm

## Independent tip rotation

- Independent distal tip rotation for user-controlled transducer orientation
- A unique knob that allows for fine adjustment and a 360° independent rotating tip

\*With the compatible CARTO™ 3 EP Navigation System.

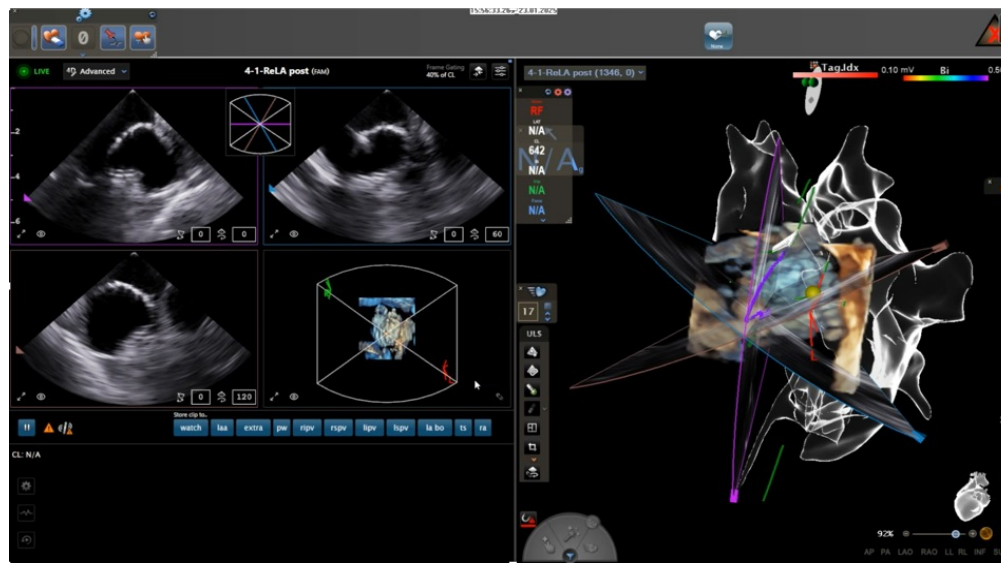
# The simplicity you want



# The versatility your concomitant EP procedures demand

NUVISION™ NAV Ultrasound Catheter enables you to do more in a single procedure, with the ability to guide ablation and structural heart procedures using the same 4D ICE catheter.

- ✓ Enjoy high-definition, real-time guidance for both interventions
- ✓ No need to revert to TEE or perform catheter exchange
- ✓ Go farther with the versatility of 4D ICE for concomitant procedures



**96%** success in device selection

NUVISION™ Ultrasound Catheter measurements accurately predicted the final device size that was implanted in 96.3% of cases.\*†

**High** consistency with TEE in LAA measurements‡

\*Registry study (n=274); NUVISION™ Ultrasound Catheter group 96.3% vs. 2D-ICE group 80.4% (p=0.005).

†2D ICE catheters used: 10 F SOUNDSTAR™ or AcuNav™ Ultrasound Catheter and 9 F ViewFlex Xtra ICE Catheter.

‡Registry study (n=274); ostial diameters Pearson's correlation coefficient r=0.94, p<0.001, Mean Landing zone (LZ) 23.51 ± 3.06 mm with TEE vs. 23.74 ± 3.04 mm with 3D-ICE.

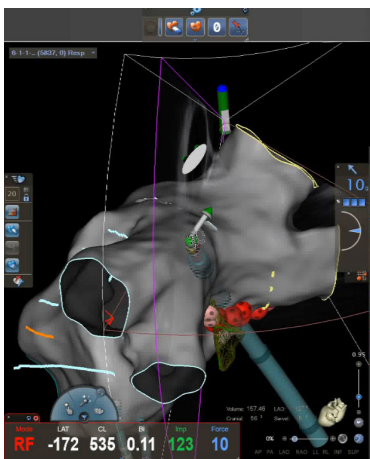
# CARTOSOUND™ 4D Module

Your focus is the patient. Not image acquisition.\* NUVISION™ NAV Ultrasound Catheter with 4D ICE enhances your ability to map anatomical structures with ease.\*



## Ultrasound Remote User Interface (UI)

Enables control of the Vivid™ S70N Ultrasound System from the CARTO™ 3 mapping system eliminating the need to control the ultrasound machine at the console, streamlining your procedural workflow.†



## Ablation catheter tracking

Allows you to track the tip of your focal ablation catheters in any 2D imaging mode (Bi-Plane, Tri-Plane, V-Plane and 2D) to ensure you have tissue to catheter contact without the need to manipulate the NUVISION™ NAV Ultrasound Catheter.

\*Compared to 2D ICE.

†Compatible with the Vivid™ S70 GE Ultrasound System.

The third party trademarks used herein are the properties of their respective owners.

# Ultrasound integration. Possibilities reimagined.

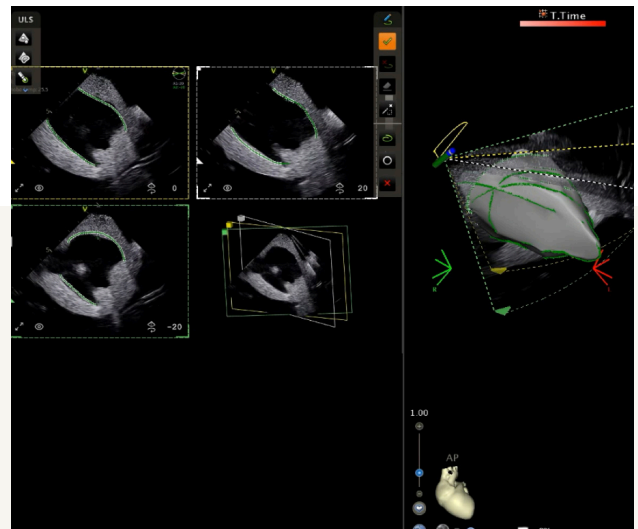


## 4D advanced mode

Enhances ultrasound data visualization and editing by allowing users to manipulate rotation, tilt, and depth of planes, customize image layouts, and utilize tools for cropping, contouring, and transparency control.

## MultiPlane CARTOSOUND®

Includes Bi-plane and Tri-plane sub-modes, enhances efficiency in reviewing clips and creating contours. This innovative system supports a hands-free catheter workflow, streamlining your approach in all ventricular tachycardia cases.





# Elevate the patient experience

## When you navigate with 4D ICE:

Reduce risk of esophageal injury in patients undergoing general anesthesia with TEE and:



Reduce anesthesia use



Reduce procedure times



Reduce fluoroscopy



Up to

# 79%

less general anesthesia\*

shorten your  
procedure time by

# 28%<sup>†</sup>

# Zero

Fluoroscopy workflow

\*Clinical study (n=243), ICE-guided vs TEE (20.6% vs 98.8%, p <0.0001).

†Retrospective study (n=144); ICE guided 58 min vs. TEE guided 80 min (p<0.001).



Visualize

Efficiency

Versatility

Integration

Patient

Ordering

# Integrated by design to elevate your experiences

Our 'Integrated by Design' approach goes far beyond a portfolio.

Our suite of products have been designed and engineered to work seamlessly together, ensuring optimal functionality and compatibility.



# NUVISION™ NAV Ultrasound Catheter

## Ordering information

Ordering Number	Description
FG12081	NUVISION™ NAV Ultrasound Catheter
FG10594	NUVISION™ Ultrasound Connector Cable
C3SOUND4D	CARTOSOUND® 4D Module
DS5074	CARTOSOUND® Remote User Interface (Vivid™ S70N v206 required) 4D Module
GES704DICEDIMDI	Vivid™ S70N v206 4D ICE DIMENSION with CARTOSOUND® and digital interface package
GES704DICEEPI	Vivid™ S70N v206 4D ICE with CARTOSOUND® and digital interface package
EM5050011	SOUNDSTAR™ ECO Cable

The third party trademarks used herein are the properties of their respective owners.

Biosense Webster's products with FDA approved/cleared instructions for use to support fluoro alternative workflows when used with the CARTO™ 3 System include the following: THERMOCOOL SMARTTOUCH™ SF Catheter, THERMOCOOL SMARTTOUCH™ Catheter, VARIPULSE™ Catheter, CARTO™ VIZIGO™ Bi-Directional Guiding Sheath, PENTARAY™ NAV ECO High Density Mapping Catheter, OCTARAY™ Mapping Catheter with TRUEref™ Technology, OPTRELL™ Mapping Catheter with TRUEref™ Technology, DECANAV™ Mapping Catheters, and Webster™ CS Catheter.

Important information: Prior to use refer to the ELECTRONIC INSTRUCTIONS FOR USE for Indications for Use, Contraindications, Warnings and Precautions. This document is available at [www.e-ifu.com](http://www.e-ifu.com).  
Caution: US law restricts this device to sale by or on the order of a physician.

© Johnson & Johnson and its affiliates 2025 US\_ELP\_ULTR\_401943

Biosense Webster, Inc.  
31 Technology Drive, Suite 200  
Irvine, CA 92618, USA  
Tel: 909-839-8500 | Tel: 800-729-9010  
Fax: 909-468-2905  
[www.biosensewebster.com](http://www.biosensewebster.com)

**Johnson & Johnson**  
**MedTech**