

IT TAKES A VILLAGE: SHARED CARE MODELS THAT WORK

James J. Lyons, MD, FACC

April 16, 2026



NO DISCLOSURES

OUTLINE

1. What is shared care?
2. Why shared care?
3. Data
4. Models that work

WHAT IS SHARED CARE?

A collaborative model of caring for advanced HF patients between a transplant/VAD implanting center and local community based cardiology/HF practice

Not one sized fits all model.

- Can vary based on level of community expertise, geography, distance and other potential barriers to care

Advances in Heart Failure

Sharing the Care of Mechanical Circulatory Support Collaborative Efforts of Patients/Caregivers, Shared-Care Sites, and Left Ventricular Assist Device Implanting Centers

Michael S. Kiernan, MD, MS; Susan M. Joseph, MD; Jason N. Katz, MD, MHS; Ahmet Kilic, MD; Jonathan D. Rich, MD; Mark P. Tallman, MD; Peter Van Buren, MD; James J. Lyons, MD; Brian Bethea, MD; Peter Eckman, MD; Igor Gosev, MD; Sangjin S. Lee, MD; Behzad Soleimani, MD; Hiroo Takayama, MD; Chetan B. Patel, MD; Nir Uriel, MD; for the Evolving Mechanical Support Research Group (EMERG) Investigators

Circ Heart Fail. 2015;8:629–635.

WHY SHARED CARE?

- Implanting center perspective
 - Reduces burden/volume of follow up care
 - Community outreach/increase referrals

WHY SHARED CARE?

- Shared care site perspective
 - Maintaining continuity of care for established patients
 - Distinguish oneself as local center of expertise

WHY SHARED CARE?

- Patient perspective
 - Return to their cardiologist
 - Care closer to home
 - Reduced travel time
 - Reduced cost
 - QOL



DATA

- Single center retrospective studies
- Outcomes are equivalent between patients cared for in traditional vs shared care models
 - Mortality
 - Infection
 - Bleeding
 - Hospitalization
- QOL better in shared care model

Shared Care for Follow-Up of Patients with Continuous Flow Left Ventricular Assist Device Implantation

Salman Farhat, Irfan Ahsan, Donald Haas; Abington Hospital—Jefferson Health, Abington, Pennsylvania

The 21st Annual Scientific Meeting • HFSA



[Articles](#) [Publish](#) [Topics](#) [About](#) [Contact](#) [Subscribe](#)

(873) · Volume 41, Issue 4, Supplement , S357, April 2022

Shared Care Program for Left Ventricular Assist Device (LVAD) Patients: Clinical Experience and Interim Report

[D. Lotan](#)¹ · [D. Oren](#)¹ · [D. Bae](#)¹ · [S. Mulcahy](#)² · [A. Atanda](#)¹ · [E. DeFilippis](#)¹ · [J. Fried](#)¹ · [J. Raikhelkar](#)¹ · [K. Clerkin](#)¹ · [V. Topkara](#)¹ · [E. Lin](#)¹ · [P. Colombo](#)¹ · [G. Sayer](#)¹ · [M. Yuzefpolskaya](#)¹ · [J. Lyons](#)² · [N. Uriel](#)¹ [Show less](#)

[Affiliations & Notes](#) [Article Info](#)

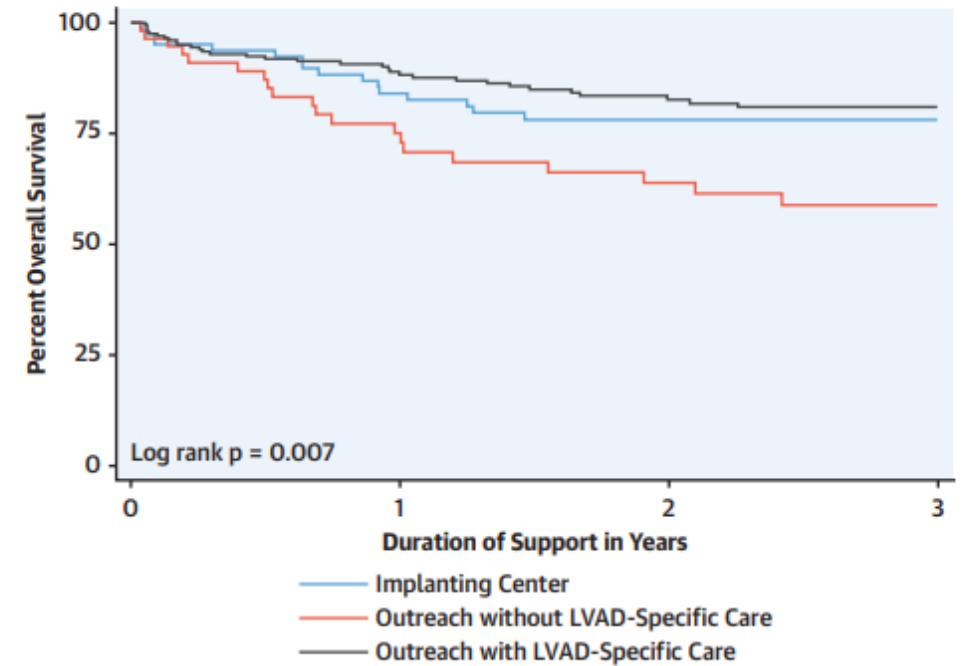
- 1 Cardiology, Columbia University Medical Center, New York City, NY
- 2 Heart Center, Nuvance Health - Vassar Brothers Medical Center, New York City, NY

Impact of Shared Care in Remote Areas for Patients With Left Ventricular Assist Devices

Michael Yaoyao Yin, MD,^{a,c} Jennifer Strege, NP-C,^{a,b,c} Edward M. Gilbert, MD,^{a,c} Josef Stehlik, MD, MPH,^{a,c} Stephen H. McKellar, MD,^{b,c} Ashley Elmer, MS,^{a,b} Thomas Anderson, MD,^{a,c} Mossab Aljuaid, MD,^{a,c} Jose Nativi-Nicolau, MD,^{a,c} Antigone G. Koliopoulou, MD,^b Erin Davis, BSN,^{a,b} James C. Fang, MD,^{a,c} Stavros G. Drakos, MD, PhD,^{a,c} Craig H. Selzman, MD,^b Omar Wever-Pinzon, MD^{a,c}



CENTRAL ILLUSTRATION Impact of LVAD-Specific Care on Patient Outcome in Shared-Care Outreach Facilities



Yin, M.Y. et al. *J Am Coll Cardiol HF.* 2020;8(4):302-12.

Patients receiving care at facilities capable of providing left ventricular assist device (LVAD)-specific care had rates of mortality similar to those of patients receiving care at the implantation center. However, patients receiving care at facilities that did not provide LVAD-specific care had higher rates of mortality.

MODELS THAT WORK

- Not one size fits all
 - Geography
 - Distance
 - Level training
- Limited published data suggests some basic level of training/proficiency required for the shared care site
 - HF vs general cardiologist
 - Trained APP/coordinator
 - Supportive partners and administrators
 - Partners in other specialties – GI, ID, anesthesia
- Cornerstone to successful shared care model is communication and collaboration
 - Shared protocols
 - Seamless care for the patient across sites

QUESTIONS?

